



**February
2020**

MONTHLY TOURIST ARRIVALS REPORT

SRI LANKA TOURISM DEVELOPMENT AUTHORITY

www.sltda.lk

Photo courtesy of SLTDA, SLRC Lovingly Sri Lanka programme



SUMMARY

The total number of international tourist arrivals to Sri Lanka during February 2020 was 207,507. In comparison to February last year, there was a decline of 17.7 % when the arrivals were 252,033.

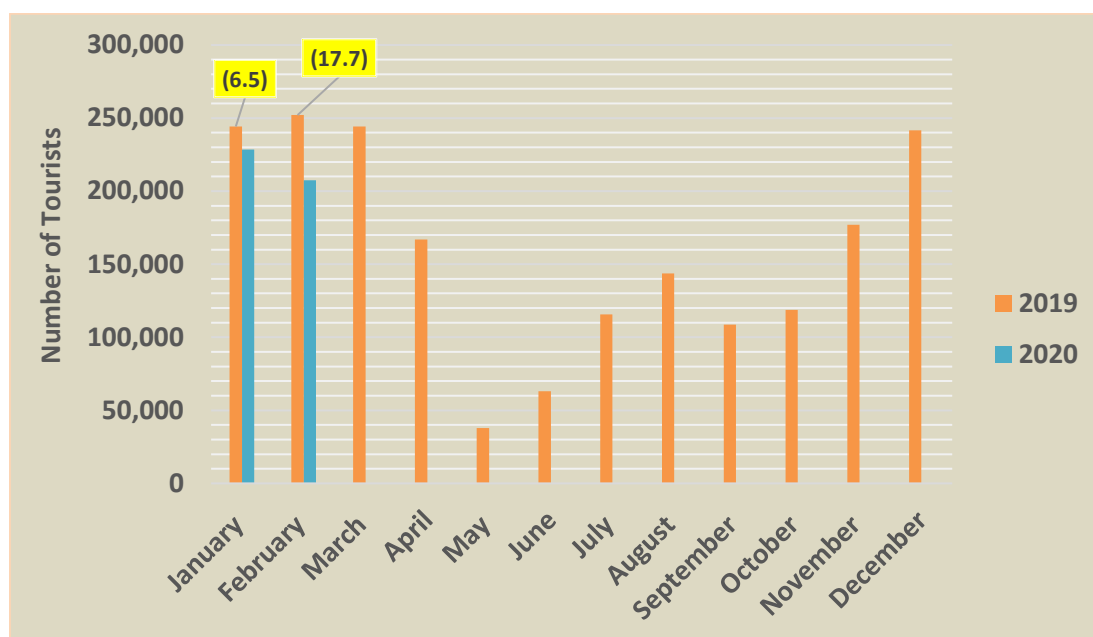
This month, the largest source market for tourists was India, followed by the United Kingdom and Russian Federation.

Almost 92 % of tourists travelled by air to Sri Lanka.

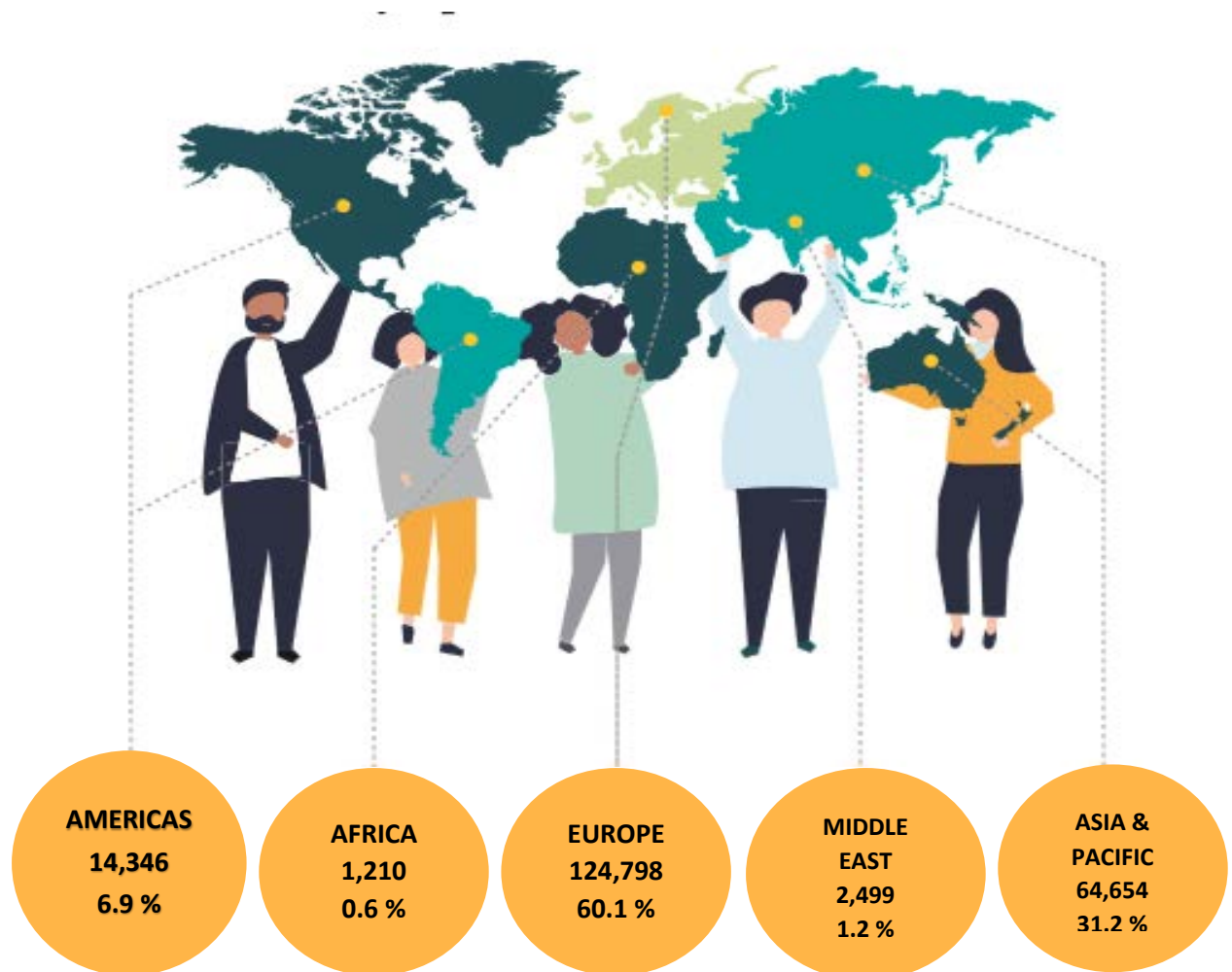
Month	2019	2020	% change 2019/2020
January	244,239	228,434	(6.5)
February	252,033	207,507	(17.7)
March	244,328		
April	166,975		
May	37,802		
June	63,072		
July	115,701		
August	143,587		
September	108,575		
October	118,743		
November	176,984		
December	241,663		
Total	1,913,702	435,941	



Tourist Arrivals – February
207,507
% change (17.7)



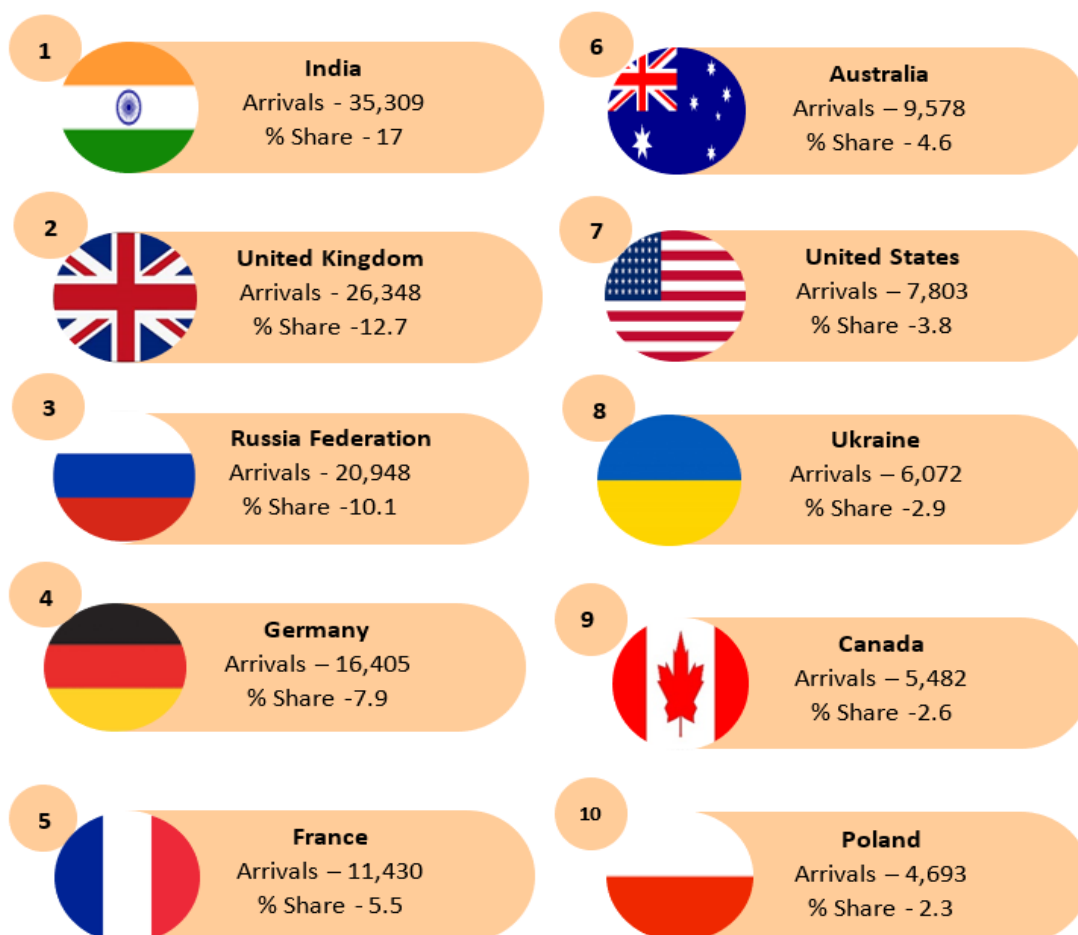
TOURIST ARRIVALS BY REGION AND PERCENTAGE SHARE



Europe became the largest source of tourist traffic to Sri Lanka with 60.1 % of the total traffic received in February 2020. Asia and Pacific accounted for 31.2% of the total traffic, Americas 6.9%, Middle East 1.2% and Africa 0.6%. In comparison to February last year the highest decline of 32.3% was recorded for Middle East region while Asia and Pacific recorded a decline of 31.3%. Americas recorded a decline of 16.2 % whereas Europe recorded a decline of 8.2%. It is noteworthy that all regions have recorded a decline in arrivals. This could be due to the outbreak of the COVID -19 coupled with the effects of Easter attack. It is noteworthy that Arrivals from Russian Federation has recorded an increase of 61% in comparison to February 2019. In contrast, tourist arrivals from China has recorded a decline of 92.5% in comparison to February 2019.

TOP TEN SOURCE MARKETS – FEBRUARY

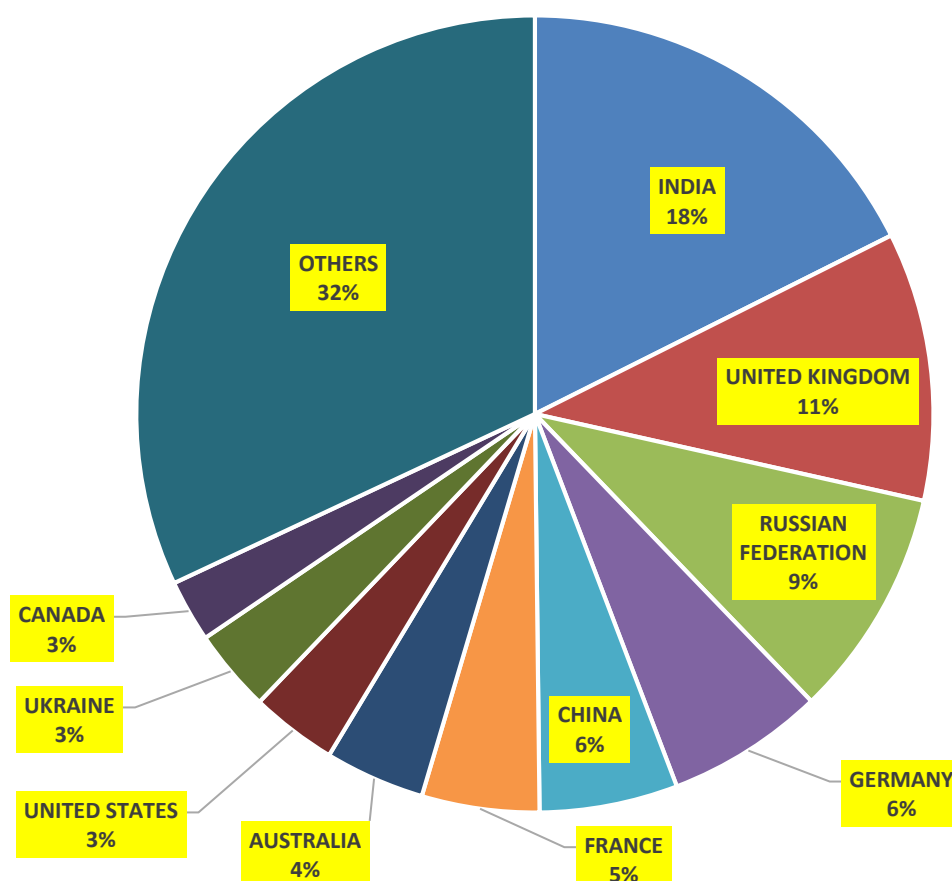
India, United Kingdom, Russian Federation, Germany and France were Sri Lanka's top five international tourist generating markets in the month of February this year. India was the largest source of tourist traffic to Sri Lanka with 17% of the total traffic received in February 2020. United Kingdom accounted for 12.7% of the total traffic; while Russian Federation, Germany and France accounted for 10.1%, 7.9% and 5.5% respectively. It is noteworthy that China has been dropped from the top ten tourist generating markets of Sri Lanka for the first time since 2012.



Rank	Country of Residence	Tourist Arrivals February 2020			Tourist Arrivals February 2019	% Change February 2020/2019
		By Air	By Sea	Total		
1	INDIA	34,169	1,140	35,309	32,286	9.4
2	UNITED KINGDOM	22,179	4,169	26,348	29,750	(11.4)
3	RUSSIAN FEDERATION	20,633	315	20,948	13,008	61.0
4	GERMANY	14,766	1,639	16,405	17,268	(5.0)
5	FRANCE	11,226	204	11,430	17,295	(33.9)
6	AUSTRALIA	7,510	2,068	9,578	8,810	8.7
7	UNITED STATES	6,123	1,680	7,803	9,678	(19.4)
8	UKRAINE	5,839	233	6,072	5,353	13.4
9	CANADA	4,599	883	5,482	6,469	(15.3)
10	POLAND	4,521	172	4,693	3,302	42.1

TOP TEN SOURCE MARKETS – JANUARY TO FEBRUARY - 2020

India, United Kingdom, Russian Federation, Germany and China were Sri Lanka's top five international tourist generating markets from January to February this year. India was the largest source of tourist traffic to Sri Lanka with 18% of the total traffic received from January to February 2020. UK accounted for 11% of the total traffic; while Russian Federation, Germany and China accounted for 9%, 6% (both) respectively.



Rank	Country of Residence	Tourist Arrivals (Jan - Feb) 2020	Tourist Arrivals (Jan - Feb) 2019	% Change (Jan - Feb 2020 & Jan -Feb 2019)
1	INDIA	76,757	72,335	6.1
2	UNITED KINGDOM	47,486	55,786	(14.9)
3	RUSSIAN FEDERATION	40,564	26,482	53.2
4	GERMANY	27,899	31,295	(10.9)
5	CHINA	24,459	54,453	(55.1)
6	FRANCE	20,782	29,187	(28.8)
7	AUSTRALIA	17,693	19,178	(7.7)
8	UNITED STATES	15,297	17,527	(12.7)
9	UKRAINE	14,621	11,834	23.6
10	CANADA	10,992	12,309	(10.7)

INTERNATIONAL TOURIST ARRIVALS BY COUNTRY OF RESIDENCE

		February 2020			Total Tourist Arrivals February 2019	% Change February (20/19)	Total Tourist Arrivals Up to February 2020	Total Tourist Arrivals Up to February 2019	% Change up to February 2020
		Tourist Arrivals							
		By Air	By Sea	Total					
<u>AMERICAS</u>		11,581	2,765	14,346	17,128	(16.2)	28,570	31,899	(10.4)
North America		10,845	2,621	13,466	16,280	(17.3)	26,608	30,113	(11.6)
Canada		4,599	883	5,482	6,469	(15.3)	10,992	12,309	(10.7)
Mexico		123	58	181	133	36.1	319	277	15.2
United States		6,123	1,680	7,803	9,678	(19.4)	15,297	17,527	(12.7)
Caribbean & Central America		118	6	124	94	31.9	204	186	9.7
Costa Rica		24	0	24	21	14.3	33	42	(21.4)
Jamaica		16	2	18	7	157.1	25	9	177.8
Others		78	4	82	66	24.2	146	135	8.1
South America		618	138	756	754	0.3	1,758	1,600	9.9
Argentina		125	15	140	158	(11.4)	364	350	4.0
Brazil		256	81	337	233	44.6	804	563	42.8
Chile		93	24	117	204	(42.6)	245	336	(27.1)
Colombia		64	8	72	68	5.9	160	156	2.6
Others		80	10	90	91	(1.1)	185	195	(5.1)
<u>AFRICA</u>		1,024	186	1,210	1,222	(1.0)	2,507	3008	(16.7)
<u>North Africa</u>		236	27	263	230	14.3	569	547	4.0
Morocco		116	20	136	96	41.7	261	224	16.5
Sudan		39	1	40	25	60.0	107	90	18.9
Others		81	6	87	109	(20.2)	201	233	(13.7)
Sub-Saharan Africa		788	159	947	992	(4.5)	1,938	2,461	(21.3)
Kenya		50	0	50	58	(13.8)	95	126	(24.6)
Mauritius		44	0	44	50	(12.0)	151	150	0.7
Nigeria		13	0	13	13	0.0	25	56	(55.4)
South Africa		431	113	544	747	(27.2)	1,230	1,617	(23.9)
Others		250	46	296	124	138.7	437	512	(14.6)

		February 2020			Total Tourist Arrivals February 2019	% Change February (20/19)	Total Tourist Arrivals Up to February 2020	Total Tourist Arrivals Up to February 2019	% Change up to February 2020
		Tourist Arrivals							
		By Air	By Sea	Total					
<u>ASIA & PACIFIC</u>		60,495	4,159	64,654	94,058	(31.3)	156,855	193,937	(19.1)
North East Asia		6,440	99	6,539	35,829	(81.7)	34,720	69,064	(49.7)
China		2,058	38	2,096	28,039	(92.5)	24,459	54,453	(55.1)
Japan		2,997	18	3,015	4,878	(38.2)	5,932	8,431	(29.6)
South Korea		797	38	835	1,606	(48.0)	2,412	3,746	(35.6)
Taiwan		576	4	580	1,284	(54.8)	1,876	2,381	(21.2)
Others		12	1	13	22	(40.9)	41	53	(22.6)
South East Asia		5,709	606	6,315	7,971	(20.8)	11,899	13,826	(13.9)
Cambodia		152	0	152	745	(79.6)	298	873	(65.9)
Indonesia		455	60	515	484	6.4	916	974	(6.0)
Malaysia		1,374	26	1,400	2,070	(32.4)	2,799	3,551	(21.2)
Myanmar		197	17	214	274	(21.9)	404	522	(22.6)
Philippines		1,426	464	1,890	1,485	27.3	3,089	2,729	13.2
Singapore		855	23	878	1,500	(41.5)	2,092	2,617	(20.1)
Thailand		914	13	927	999	(7.2)	1,663	1,937	(14.1)
Vietnam		322	3	325	388	(16.2)	612	577	6.1
Others		14	0	14	26	(46.2)	26	46	(43.5)
<u>Oceania</u>		8,398	2,221	10,619	9,900	7.3	19,811	21,362	(7.3)
Australia		7,510	2,068	9,578	8,810	8.7	17,693	19,178	(7.7)
New Zealand		835	152	987	1,070	(7.8)	2,022	2,137	(5.4)
Others		53	1	54	20	170.0	96	47	104.3
South Asia		39,948	1,233	41,181	40,358	2.0	90,425	89,685	0.8
Afghanistan		64	0	64	47	36.2	129	96	34.4
Bangladesh		747	13	760	731	4.0	1,774	1,677	5.8
Bhutan		69	0	69	74	(6.8)	206	111	85.6
India		34,169	1,140	35,309	32,286	9.4	76,757	72,335	6.1
Iran		290	3	293	326	(10.1)	623	530	17.5
Maldives		2,957	3	2,960	4931	(40.0)	7,224	10,935	(33.9)
Nepal		503	57	560	467	19.9	1,149	962	19.4
Pakistan		1,149	17	1,166	1496	(22.1)	2,563	3,039	(15.7)

		February 2020			Total Tourist Arrivals February 2019	% Change February (20/19)	Total Tourist Arrivals Up to February 2020	Total Tourist Arrivals Up to February 2019	% Change up to February 2020
		Tourist Arrivals							
		By Air	By Sea	Total					
EUROPE		115,577	9,221	124,798	135,934	(8.2)	238,399	258,695	(7.8)
Northern Eur.		30,736	4,537	35,273	43,412	(18.7)	65,047	81,826	(20.5)
Denmark		2,173	50	2,223	3,980	(44.1)	4,399	7,039	(37.5)
Finland		987	50	1,037	1,668	(37.8)	2,023	3,257	(37.9)
Norway		1,273	31	1,304	2,053	(36.5)	2,683	3,959	(32.2)
Sweden		3,146	93	3,239	4,739	(31.7)	6,338	9,431	(32.8)
United Kingdom		22,179	4,169	26,348	29,750	(11.4)	47,486	55,786	(14.9)
Others		978	144	1,122	1,222	(8.2)	2,118	2,354	(10.0)
Western Eur.		35,890	2,234	38,124	47,961	(20.5)	67,994	86,085	(21.0)
Austria		1,933	91	2,024	2,709	(25.3)	3,698	4,997	(26.0)
Belgium		1,441	59	1,500	1,681	(10.8)	2,743	2,959	(7.3)
France		11,226	204	11,430	17,295	(33.9)	20,782	29,187	(28.8)
Germany		14,766	1,639	16,405	17,268	(5.0)	27,899	31,295	(10.9)
Netherlands		3,651	112	3,763	5,126	(26.6)	7,301	10,227	(28.6)
Switzerland		2,800	124	2,924	3,796	(23.0)	5,432	7,253	(25.1)
Others		73	5	78	86	(9.3)	139	167	(16.8)
Central / Eastern Europe		40,355	965	41,320	32,375	27.6	84,203	65,208	29.1
Belarus		1,099	2	1,101	930	18.4	2,200	1,927	14.2
Czech Republic		3,635	11	3,646	4,449	(18.0)	6,319	7,236	(12.7)
Estonia		647	4	651	559	16.5	1,045	1,060	(1.4)
Hungary		600	55	655	856	(23.5)	1,413	1,701	(16.9)
Kazakhstan		657	16	673	327	105.8	1,855	836	121.9
Lithuania		393	4	397	574	(30.8)	911	1,025	(11.1)
Poland		4,521	172	4,693	3,302	42.1	10,270	7,142	43.8
Romania		619	74	693	913	(24.1)	1,478	1,804	(18.1)
Russian Federation		20,633	315	20,948	13,008	61.0	40,564	26,482	53.2
Slovakia		714	16	730	913	(20.0)	1,269	1,693	(25.0)
Ukraine		5,839	233	6,072	5,353	13.4	14,621	11,834	23.6
Others		998	63	1061	1,191	(10.9)	2,258	2,468	(8.5)

		February 2020			Total Tourist Arrivals February 2019	% Change February (20/19)	Total Tourist Arrivals Up to February 2020	Total Tourist Arrivals Up to February 2019	% Change up to February 2020
		Tourist Arrivals							
		By Air	By Sea	Total					
<u>Southern / Mediterranean Europe</u>		8,596	1,485	10,081	12,186	(17.3)	21,155	25,576	(17.3)
Greece		432	186	618	694	(11.0)	1,216	1,460	(16.7)
Italy		3,037	706	3,743	5,363	(30.2)	8,197	11,796	(30.5)
Portugal		685	165	850	592	43.6	1,418	1,044	35.8
Spain		1,309	71	1,380	1,771	(22.1)	2,889	3,609	(20.0)
Turkey		572	241	813	692	17.5	1,958	1,276	53.4
Israel		1,472	67	1,539	1,532	0.5	3,227	3,431	(5.9)
Others		1,089	49	1,138	1,542	(26.2)	2,250	2,960	(24.0)
<u>MIDDLE EAST</u>		2,463	36	2,499	3,691	(32.3)	9,610	8,733	10.0
Bahrain		131	0	131	162	(19.1)	535	556	(3.8)
Egypt		381	19	400	304	31.6	804	624	28.8
Iraq		52	0	52	54	(3.7)	123	149	(17.4)
Jordan		206	0	206	240	(14.2)	567	610	(7.0)
Kuwait		325	1	326	467	(30.2)	791	1,012	(21.8)
Lebanon		220	3	223	410	(45.6)	435	799	(45.6)
Oman		226	3	229	355	(35.5)	997	919	8.5
Qatar		53	0	53	119	(55.5)	122	184	(33.7)
Saudi Arabia		659	3	662	1,157	(42.8)	4,576	2,916	56.9
United Arab Emirates		122	1	123	271	(54.6)	322	617	(47.8)
Others		88	6	94	152	(38.2)	338	347	(2.6)
TOTAL		191,140	16,367	207,507	252,033	(17.7)	435,941	496,272	(12.2)

* All visitor arrival statistics in this report are from the Department of Immigration & Emigration.