



**January
2020**

MONTHLY TOURIST ARRIVALS REPORT

SRI LANKA TOURISM DEVELOPMENT AUTHORITY

www.sltda.lk

Photo courtesy of SLTDA, SLRC Lovingly Sri Lanka programme



SUMMARY

The total number of international tourist arrivals to Sri Lanka during January 2020 was 228,434. In comparison to January last year, there was a decline of 6.5% when the arrivals were 244,239.

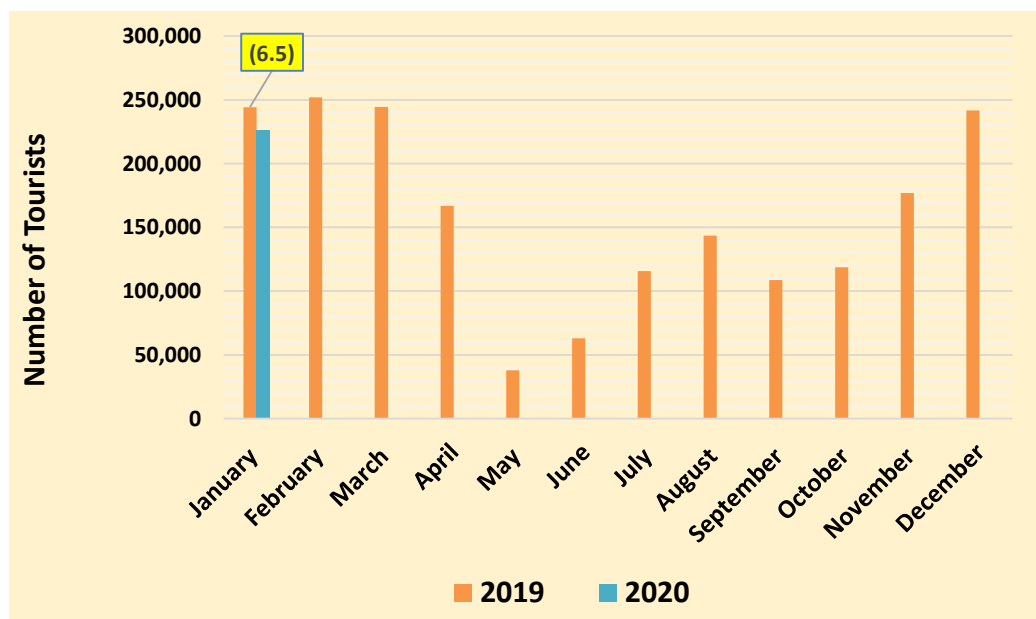
This month, the largest source market for tourists was India, followed by the China and United Kingdom.

Almost 95 % of tourists travelled by air to Sri Lanka.

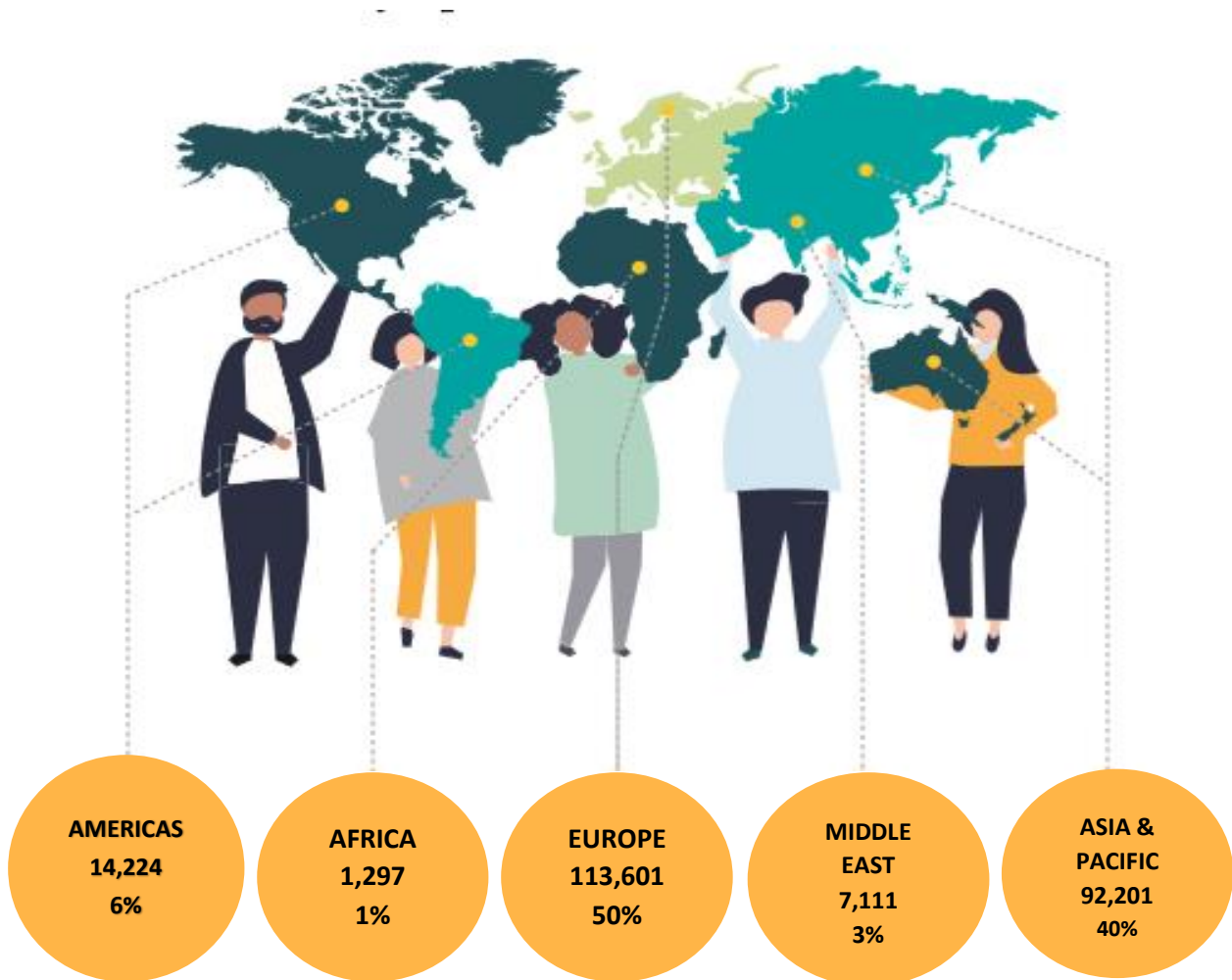
Month	2019	2020	% change 2019/2020
January	244,239	228,434	(6.5)
February	252,033		
March	244,328		
April	166,975		
May	37,802		
June	63,072		
July	115,701		
August	143,587		
September	108,575		
October	118,743		
November	176,984		
December	241,663		
Total	1,913,702		



Tourist Arrivals – January
228,434
% change (6.5)



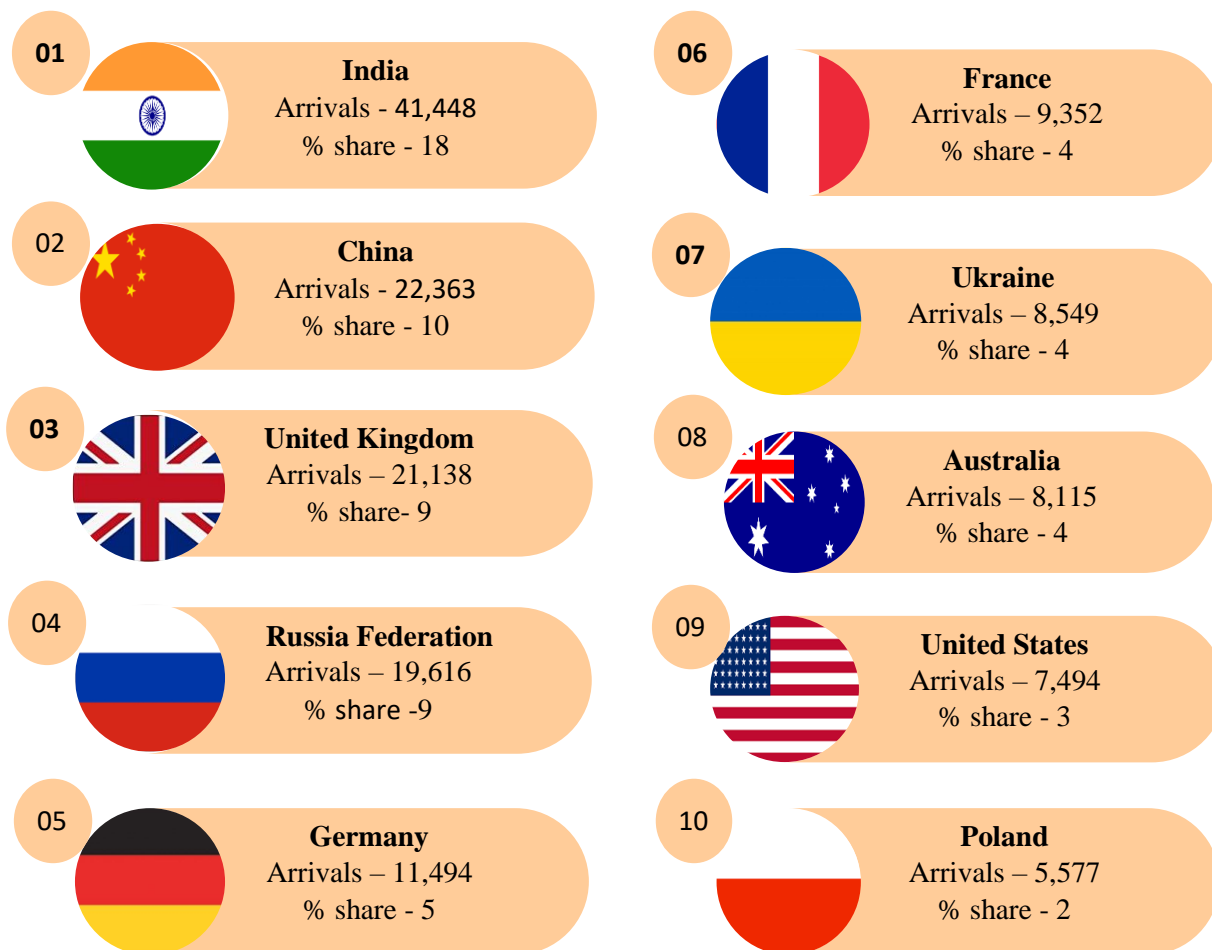
TOURIST ARRIVALS BY REGION AND PERCENTAGE SHARE



Europe became the largest source of tourist traffic to Sri Lanka with 50% of the total traffic received in January 2020. Asia and Pacific accounted for 40% of the total traffic, Americas 6%, Middle East 3% and Africa 1%. In comparison to January last year the highest decline of 27.4 was recorded for African region while Asia and Pacific recorded a decline of 7.7%. Europe recorded a decline of 7.5% whereas Americas recorded a decline of 3.7%. It is noteworthy that Middle East has recorded an increase of 41% in arrivals as a region and as a country Saudi Arabia has recorded an increase of 122.5%.

TOP TEN SOURCE MARKETS – JANUARY

India, China, United Kingdom, Russian Federation and Germany were Sri Lanka's top five international tourist generating markets in the month of January this year. India was the largest source of tourist traffic to Sri Lanka with 18% of the total traffic received in January 2019. China accounted for 10% of the total traffic; while UK, Russian Federation and Germany accounted for 9% (both) and 5% respectively.



Rank	Country of Residence	Tourist Arrivals January 2020			Tourist Arrivals January 2019	% Change January 2020/2019
		By Air	By Sea	Total		
1	INDIA	40,308	1,140	41,448	40,049	3.5
2	CHINA	22,206	157	22,363	26,414	(15.3)
3	UNITED KINGDOM	18,909	2,229	21,138	26,036	(18.8)
4	RUSSIAN FEDERATION	19,046	570	19,616	13,474	45.6
5	GERMANY	11,124	370	11,494	14,027	(18.1)
6	FRANCE	9,052	300	9,352	11,892	(21.4)
7	UKRAINE	8,168	381	8,549	6,481	31.9
8	AUSTRALIA	7,801	314	8,115	10,368	(21.7)
9	UNITED STATES	6,689	805	7,494	7,849	(4.5)
10	POLAND	5,348	229	5,577	3,840	45.2

INTERNATIONAL TOURIST ARRIVALS BY COUNTRY OF RESIDENCE

	January 2020			Total Tourist Arrivals January 2019	% Change January (20/19)
	Tourist Arrivals				
	By Air	By Sea	Total		
<u>AMERICAS</u>	12,760	1,464	14,224	14,771	(3.7)
North America	11,873	1,269	13,142	13,833	(5.0)
Canada	5,085	425	5,510	5,840	(5.7)
Mexico	99	39	138	144	(4.2)
United States	6,689	805	7,494	7,849	(4.5)
Caribbean & Central America	76	4	80	92	(13.0)
Costa Rica	9	0	9	21	(57.1)
Jamaica	7	0	7	2	250.0
Others	60	4	64	69	(7.2)
South America	811	191	1,002	846	18.4
Argentina	175	49	224	192	16.7
Brazil	353	114	467	330	41.5
Chile	113	15	128	132	(3.0)
Colombia	87	1	88	88	0.0
Others	83	12	95	104	(8.7)
<u>AFRICA</u>	1,121	176	1,297	1,786	(27.4)
North Africa	282	24	306	317	(3.5)
Morocco	109	16	125	128	(2.3)
Sudan	62	5	67	65	3.1
Others	111	3	114	124	(8.1)
Sub-Saharan Africa	839	152	991	1,469	(32.5)
Kenya	41	4	45	68	(33.8)
Mauritius	72	35	107	100	7.0
Nigeria	12	0	12	43	(72.1)
South Africa	582	104	686	870	(21.1)
Others	132	9	141	388	(63.7)

	January 2020			Total Tourist Arrivals January 2019	% Change January (20/19)
	Tourist Arrivals				
	By Air	By Sea	Total		
<u>ASIA & PACIFIC</u>	90,021	2,180	92,201	99,879	(7.7)
North East Asia	27,951	230	28,181	33,235	(15.2)
China	22,206	157	22,363	26,414	(15.3)
Japan	2,905	12	2,917	3,553	(17.9)
South Korea	1,544	33	1,577	2,140	(26.3)
Taiwan	1,268	28	1,296	1,097	18.1
Others	28	0	28	31	(9.7)
South East Asia	5,208	376	5,584	5,855	(4.6)
Cambodia	146	0	146	128	14.1
Indonesia	339	62	401	490	(18.2)
Malaysia	1,378	21	1,399	1,481	(5.5)
Myanmar	168	22	190	248	(23.4)
Philippines	946	253	1,199	1,244	(3.6)
Singapore	1,201	13	1,214	1,117	8.7
Thailand	733	3	736	938	(21.5)
Vietnam	285	2	287	189	51.9
Others	12	0	12	20	(40.0)
<u>Oceania</u>	8,835	357	9,192	11,462	(19.8)
Australia	7,801	314	8,115	10,368	(21.7)
New Zealand	994	41	1,035	1,067	(3.0)
Others	40	2	42	27	55.6
South Asia	48,027	1,217	49,244	49,327	(0.2)
Afghanistan	65	0	65	49	32.7
Bangladesh	1,010	4	1,014	946	7.2
Bhutan	137	0	137	37	270.3
India	40,308	1,140	41,448	40,049	3.5
Iran	330	0	330	204	61.8
Maldives	4,264	0	4,264	6,004	(29.0)
Nepal	537	52	589	495	19.0
Pakistan	1,376	21	1,397	1,543	(9.5)

	January 2020			Total Tourist Arrivals January 2019	% Change January (20/19)
	Tourist Arrivals				
	By Air	By Sea	Total		
EUROPE	107,225	6,376	113,601	122,761	(7.5)
Northern Eur.	27,224	2,550	29,774	38,414	(22.5)
Denmark	2,094	82	2,176	3,059	(28.9)
Finland	956	30	986	1,589	(37.9)
Norway	1,346	33	1,379	1,906	(27.6)
Sweden	3,031	68	3,099	4,692	(34.0)
United Kingdom	18,909	2,229	21,138	26,036	(18.8)
Others	888	108	996	1,132	(12.0)
Western Eur.	29,042	828	29,870	38,124	(21.7)
Austria	1,653	21	1,674	2,288	(26.8)
Belgium	1,206	37	1,243	1,278	(2.7)
France	9,052	300	9,352	11,892	(21.4)
Germany	11,124	370	11,494	14,027	(18.1)
Netherlands	3,488	50	3,538	5,101	(30.6)
Switzerland	2,461	47	2,508	3,457	(27.5)
Others	58	3	61	81	(24.7)
Central / Eastern Europe	41,439	1,444	42,883	32,833	30.6
Belarus	1,070	29	1,099	997	10.2
Czech Republic	2,665	8	2,673	2,787	(4.1)
Estonia	391	3	394	501	(21.4)
Hungary	719	39	758	845	(10.3)
Kazakhstan	1,132	50	1,182	509	132.2
Lithuania	501	13	514	451	14.0
Poland	5,348	229	5,577	3,840	45.2
Romania	736	49	785	891	(11.9)
Russian Federation	19,046	570	19,616	13,474	45.6
Slovakia	531	8	539	780	(30.9)
Ukraine	8,168	381	8,549	6,481	31.9
Others	1,132	65	1,197	1,277	(6.3)

	January 2020			Total Tourist Arrivals January 2019	% Change January (20/19)
	Tourist Arrivals				
	By Air	By Sea	Total		
<u>Southern / Mediterranean Europe</u>	9,520	1,554	11,074	13,390	(17.3)
Greece	427	171	598	766	(21.9)
Italy	3,693	761	4,454	6,433	(30.8)
Portugal	508	60	568	452	25.7
Spain	1,450	59	1,509	1,838	(17.9)
Turkey	810	335	1,145	584	96.1
Israel	1,623	65	1,688	1,899	(11.1)
Others	1,009	103	1,112	1,418	(21.6)
<u>MIDDLE EAST</u>	7,070	41	7,111	5,042	41.0
Bahrain	398	6	404	394	2.5
Egypt	397	7	404	320	26.3
Iraq	71	0	71	95	(25.3)
Jordan	355	6	361	370	(2.4)
Kuwait	463	2	465	545	(14.7)
Lebanon	212	0	212	389	(45.5)
Oman	768	0	768	564	36.2
Qatar	68	1	69	65	6.2
Saudi Arabia	3,907	7	3,914	1,759	122.5
United Arab Emirates	199	0	199	346	(42.5)
Others	232	12	244	195	25.1
TOTAL	218,197	10,237	228,434	244,239	(6.5)

* All visitor arrival statistics in this report are from the Department of Immigration & Emigration.