



# Weekly Tourist Arrivals Report 2025



MAY



# SUMMARY REPORT

Tourist arrivals from 01<sup>st</sup> to 31<sup>st</sup> May 2025

	2018	2024	2025		
Month	Number of Tourists	Number of Tourists	Number of Tourists	Percentage Change (25/24)	Percentage Change (25/18)
January	238,924	208,253	252,761	21.4	5.8
February	235,618	218,350	240,217	10.0	1.9
March	233,382	209,181	229,298	9.62	(1.7)
April	180,429	148,867	174,608	17.3	(3.2)
May	129,466	112,128	132,919	18.5	2.7
June	146,828	113,470			
July	217,829	187,810			
August	200,359	164,609			
September	149,087	122,140			
October	153,123	135,907			
November	195,582	184,158			
December	253,169	248,592			
TOTAL	2,333,796	2,053,465	1,029,803		



**Tourist arrivals**  
**01<sup>st</sup> to 31<sup>st</sup> May 2025**

**132,919**



## Daily tourist arrivals, 01<sup>st</sup> to 31<sup>st</sup> May 2025



M  
A  
Y

1 <sup>st</sup> 6,311	8 <sup>th</sup> 3,961	15 <sup>th</sup> 4,021	22 <sup>nd</sup> 4,124	29 <sup>th</sup> 3,953
2 <sup>nd</sup> 5,505	9 <sup>th</sup> 4,594	16 <sup>th</sup> 4,494	23 <sup>rd</sup> 4,803	30 <sup>th</sup> 4,528
3 <sup>rd</sup> 4,591	10 <sup>th</sup> 4,495	17 <sup>th</sup> 4,364	24 <sup>th</sup> 4,314	31 <sup>st</sup> 4,318
4 <sup>th</sup> 4,115	11 <sup>th</sup> 5,864	18 <sup>th</sup> 4,214	25 <sup>th</sup> 4,186	
5 <sup>th</sup> 4,246	12 <sup>th</sup> 3,377	19 <sup>th</sup> 4,071	26 <sup>th</sup> 3,768	
6 <sup>th</sup> 4,248	13 <sup>th</sup> 3,553	20 <sup>th</sup> 3,767	27 <sup>th</sup> 3,504	
7 <sup>th</sup> 4,895	14 <sup>th</sup> 3,573	21 <sup>st</sup> 3,526	28 <sup>th</sup> 3,636	

Total

1<sup>st</sup> to 7<sup>th</sup>  
**33,911**

8<sup>th</sup> to 14<sup>th</sup>  
**29,417**

15<sup>th</sup> to 21<sup>st</sup>  
**28,457**

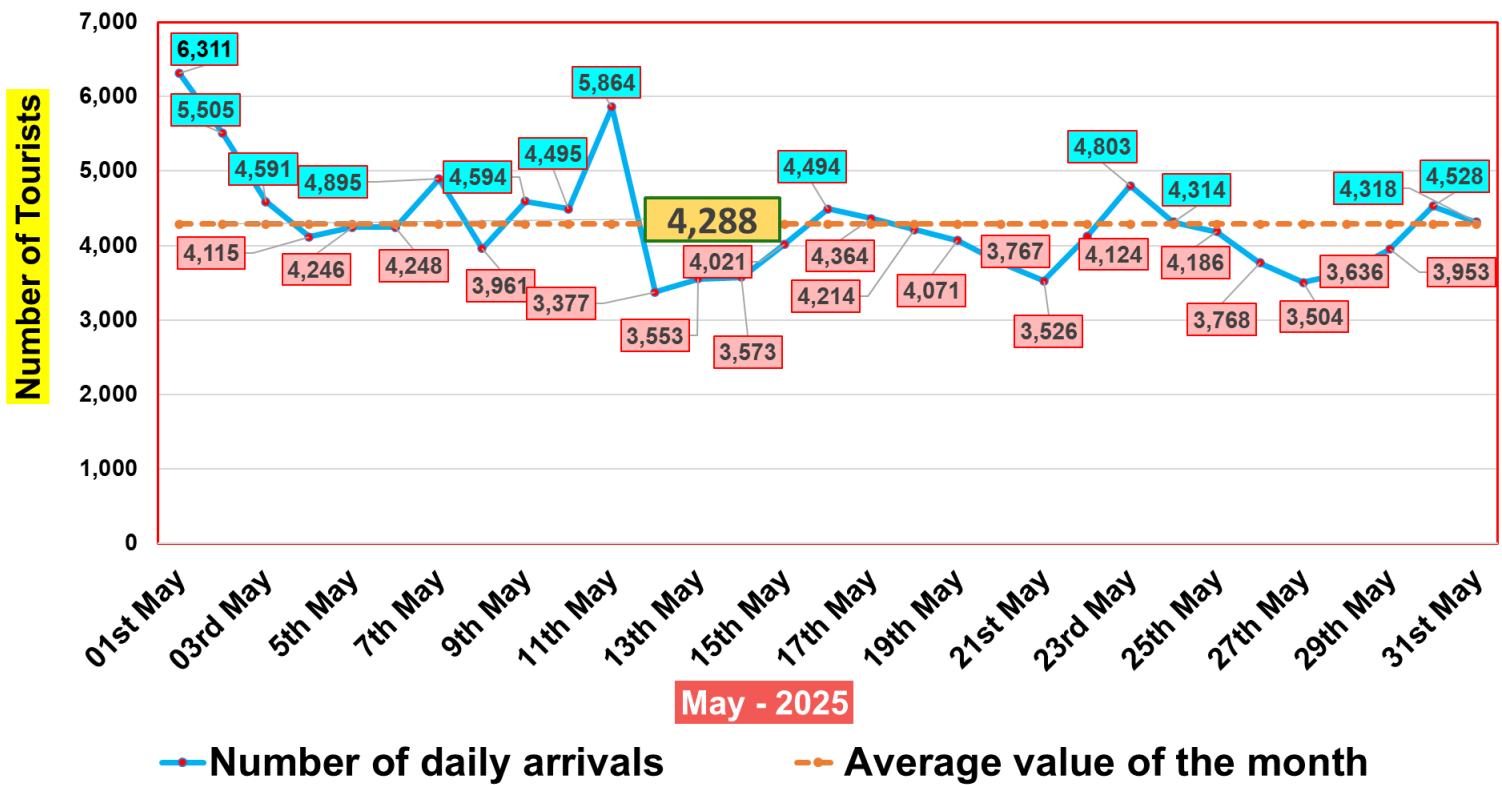
22<sup>nd</sup> to 28<sup>th</sup>  
**28,335**

29<sup>th</sup> to 31<sup>st</sup>  
**12,799**

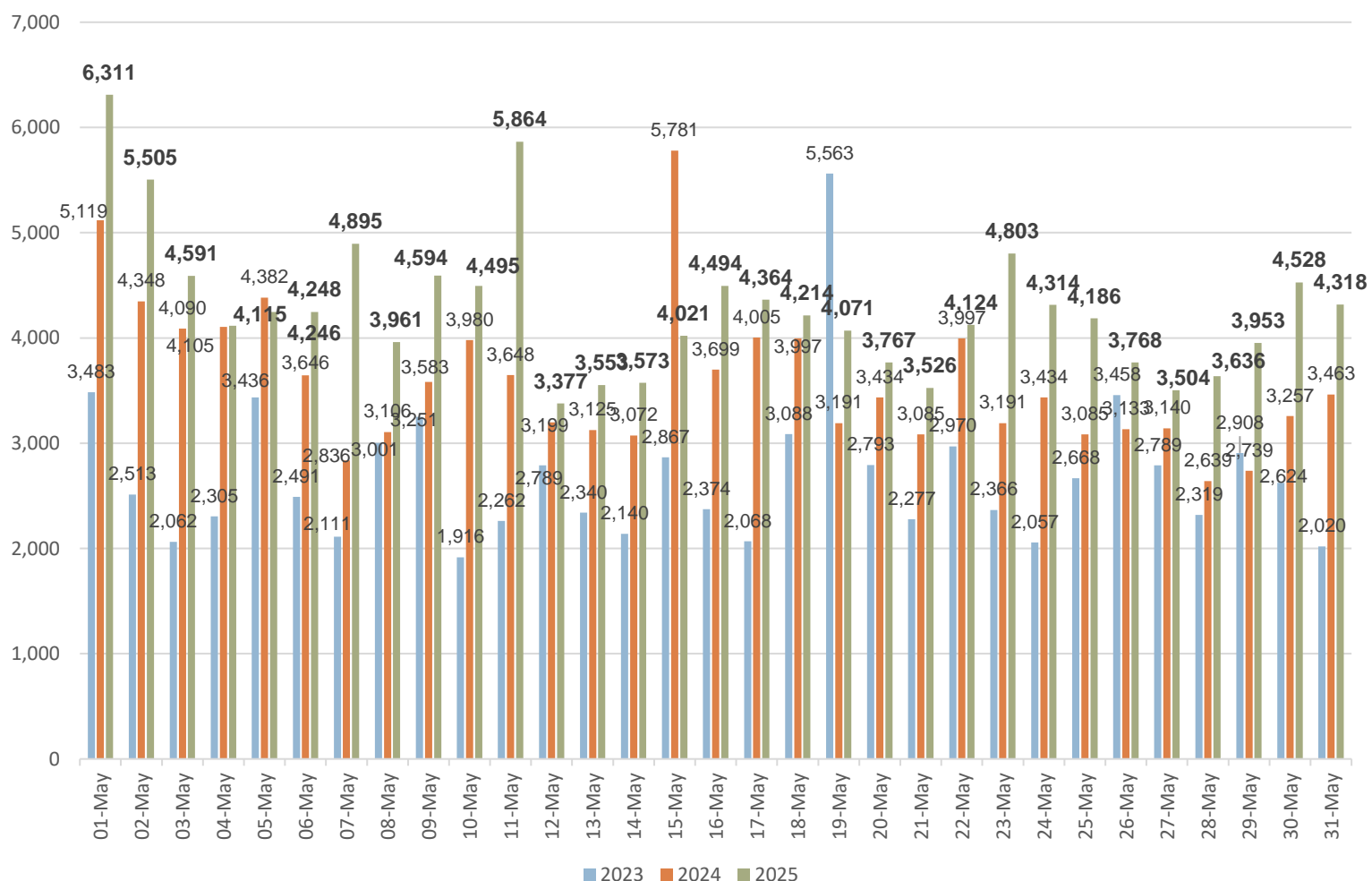




## Daily distribution of tourist arrivals, 01<sup>st</sup> to 31<sup>st</sup> May 2025



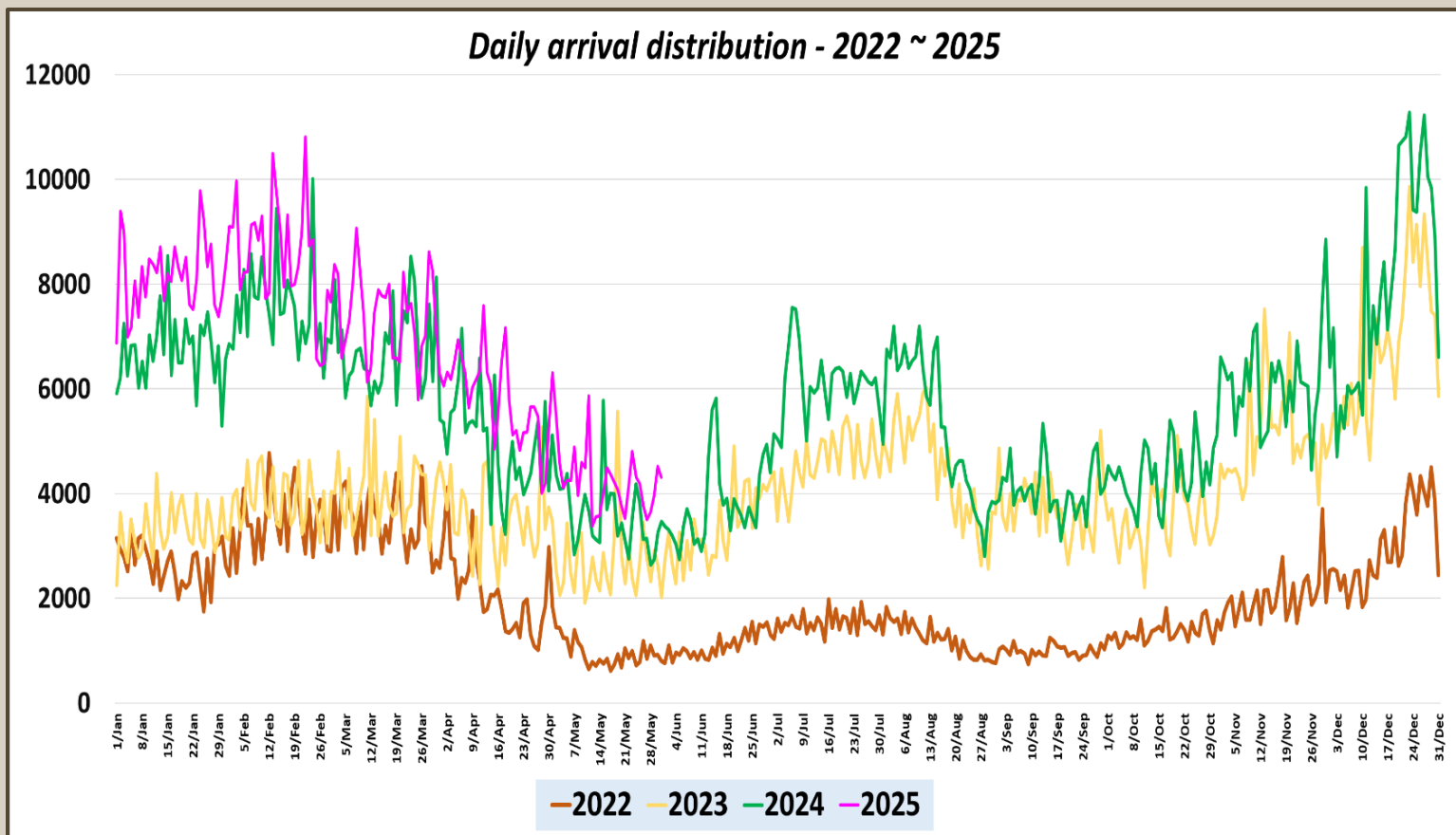
## Number of tourist arrivals, 2023, 2024 & 2025 (01<sup>st</sup> to 31<sup>st</sup> May)



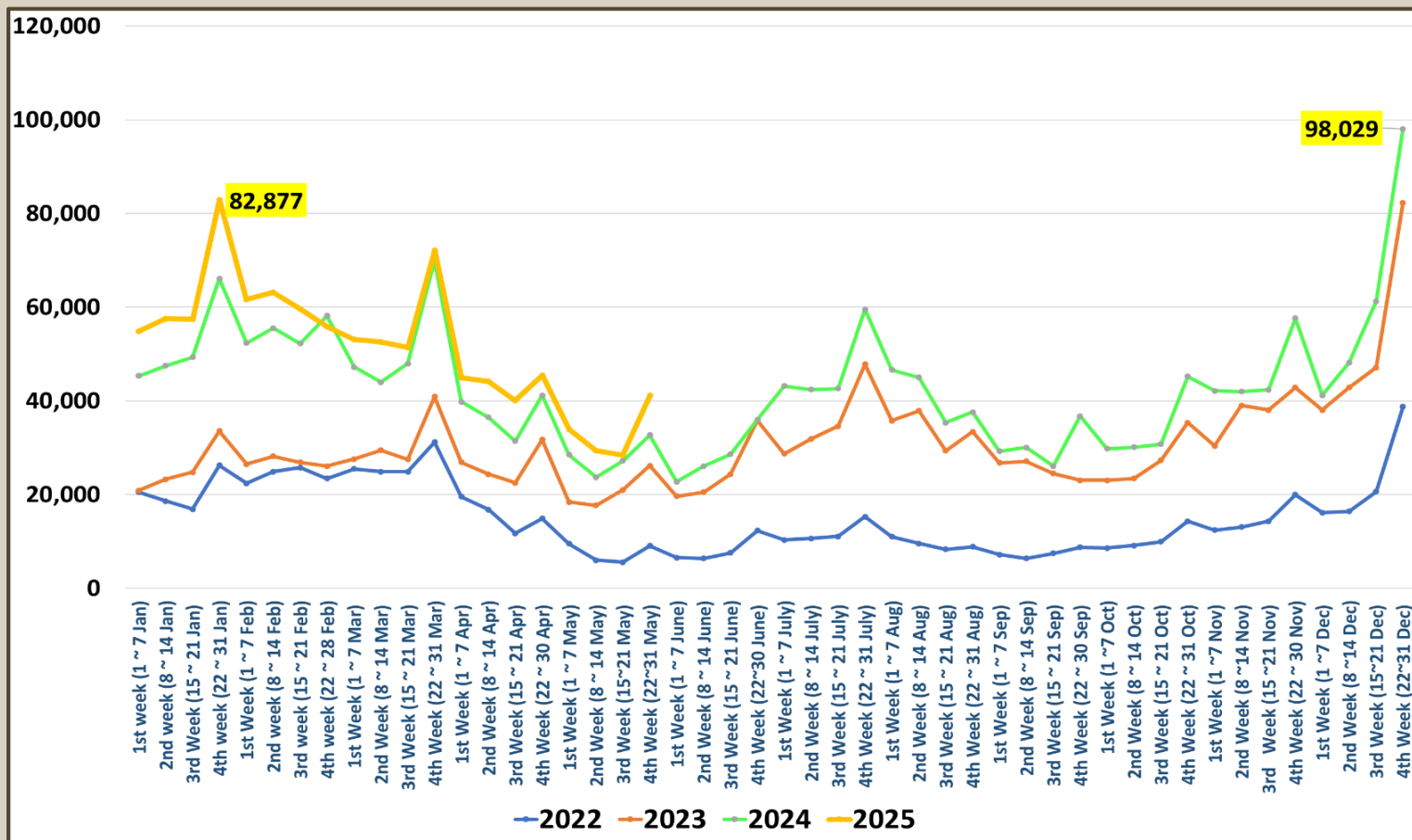




## Daily trend of tourist arrivals, 2022 - 2025













## Weekly distribution of tourist arrivals, 2022- 2025





## Top ten source markets, 01<sup>st</sup> to 31<sup>st</sup> May 2025

Rank		Country	Number of Tourists	Share %
1		India	47,001	35.4%
2		United Kingdom	9,221	6.9%
3		China	8,803	6.6%
4		Bangladesh	7,282	5.5%
5		Germany	7,223	5.4%
6		Australia	5,929	4.5%
7		France	5,470	4.1%
8		United States	3,607	2.7%
9		Canada	3,412	2.6%
10		Russian Federation	3,328	2.5%
11		Other	31,643	23.8%
		<b>Total</b>	<b>132,919</b>	



## Top twenty source markets, 01<sup>st</sup> January – 31<sup>st</sup> May 2025

Rank	Country	Number of tourists
1	India	204,060
2	Russian Federation	110,421
3	United Kingdom	96,274
4	Germany	69,078
5	France	57,112
6	China	56,983
7	Australia	44,026
8	United States	28,991
9	Bangladesh	27,311
10	Poland	24,941
11	Netherlands	23,716
12	Canada	19,877
13	Italy	17,383
14	Japan	14,366
15	Switzerland	13,993
16	Maldives	13,296
17	Spain	12,509
18	Israel	10,475
19	Czech Republic	9,971
20	Malaysia	9,202
	Others	165,818
	<b>TOTAL</b>	<b>1,029,803</b>