



DECEMBER

2025

---

WEEKLY TOURIST  
ARRIVALS



SUMMARY REPORT

## Tourist arrivals from 01<sup>st</sup> to 31<sup>st</sup> December 2025

Month	2018	2024	2025	Percentage change (25/24)	Percentage change (25/18)
	Number of tourists	Number of tourists	Number of tourists		
January	238,924	208,253	252,761	21.4	5.8
February	235,618	218,350	240,217	10.0	1.9
March	233,382	209,181	229,298	9.6	(1.7)
April	180,429	148,867	174,608	17.3	(3.2)
May	129,466	112,128	132,919	18.5	2.7
June	146,828	113,470	138,241	21.8	(5.8)
July	217,829	187,810	200,244	6.6	(8.0)
August	200,359	164,609	198,235	20.4	(1.1)
September	149,087	122,140	158,971	30.2	6.6
October	153,123	135,907	165,193	21.5	7.8
November	195,582	184,158	212,906	15.6	8.9
December	253,169	248,592	258,928	4.2	2.3
<b>TOTAL</b>	<b>2,333,796</b>	<b>2,053,465</b>	<b>2,362,521</b>	<b>15.1</b>	<b>1.2</b>



**Tourist arrivals  
01<sup>st</sup> to 31<sup>st</sup> December 2025**

**258,928**



# Daily tourist arrivals, 01<sup>st</sup> to 31<sup>st</sup> December 2025



D  
E  
C  
E  
M  
B  
E  
R

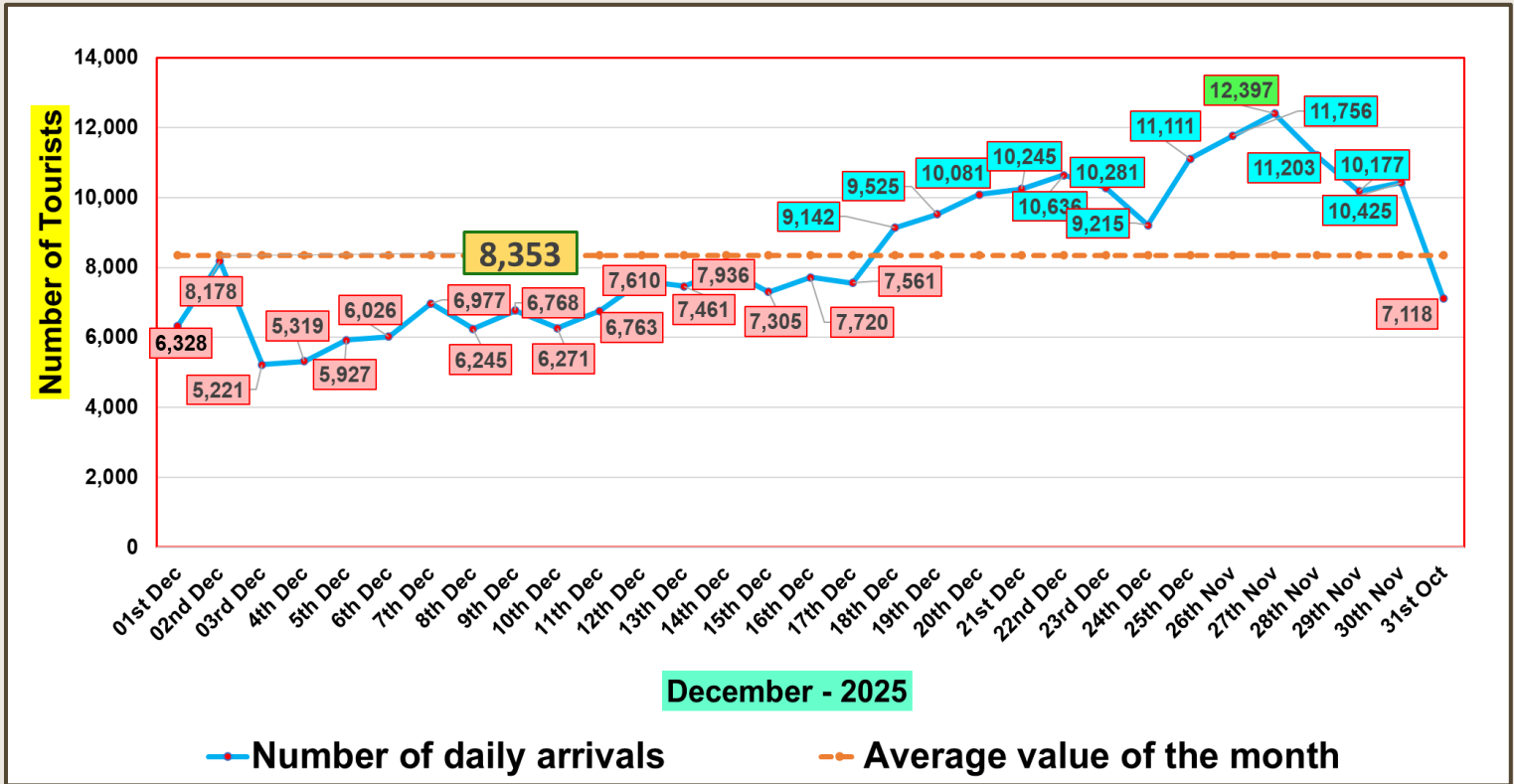
1 <sup>st</sup> 6,328	8 <sup>th</sup> 6,245	15 <sup>th</sup> 7,305	22 <sup>nd</sup> 10,636	29 <sup>th</sup> 10,177
2 <sup>nd</sup> 8,178	9 <sup>th</sup> 6,768	16 <sup>th</sup> 7,720	23 <sup>rd</sup> 10,281	30 <sup>th</sup> 10,425
3 <sup>rd</sup> 5,221	10 <sup>th</sup> 6,271	17 <sup>th</sup> 7,561	24 <sup>th</sup> 9,215	31 <sup>st</sup> 7,118
4 <sup>th</sup> 5,319	11 <sup>th</sup> 6,763	18 <sup>th</sup> 9,142	25 <sup>th</sup> 11,111	
5 <sup>th</sup> 5,927	12 <sup>th</sup> 7,610	19 <sup>th</sup> 9,525	26 <sup>th</sup> 11,756	
6 <sup>th</sup> 6,026	13 <sup>th</sup> 7,461	20 <sup>th</sup> 10,081	27 <sup>th</sup> 12,397	
7 <sup>th</sup> 6,977	14 <sup>th</sup> 7,936	21 <sup>st</sup> 10,245	28 <sup>th</sup> 11,203	

<b>Total</b>	1 <sup>st</sup> to 7 <sup>th</sup> 43,976	8 <sup>th</sup> to 14 <sup>th</sup> 49,054	15 <sup>th</sup> to 21 <sup>st</sup> 61,579	22 <sup>nd</sup> to 28 <sup>th</sup> 76,599	29 <sup>th</sup> to 31 <sup>st</sup> 27,720
--------------	--	---	--	--	--

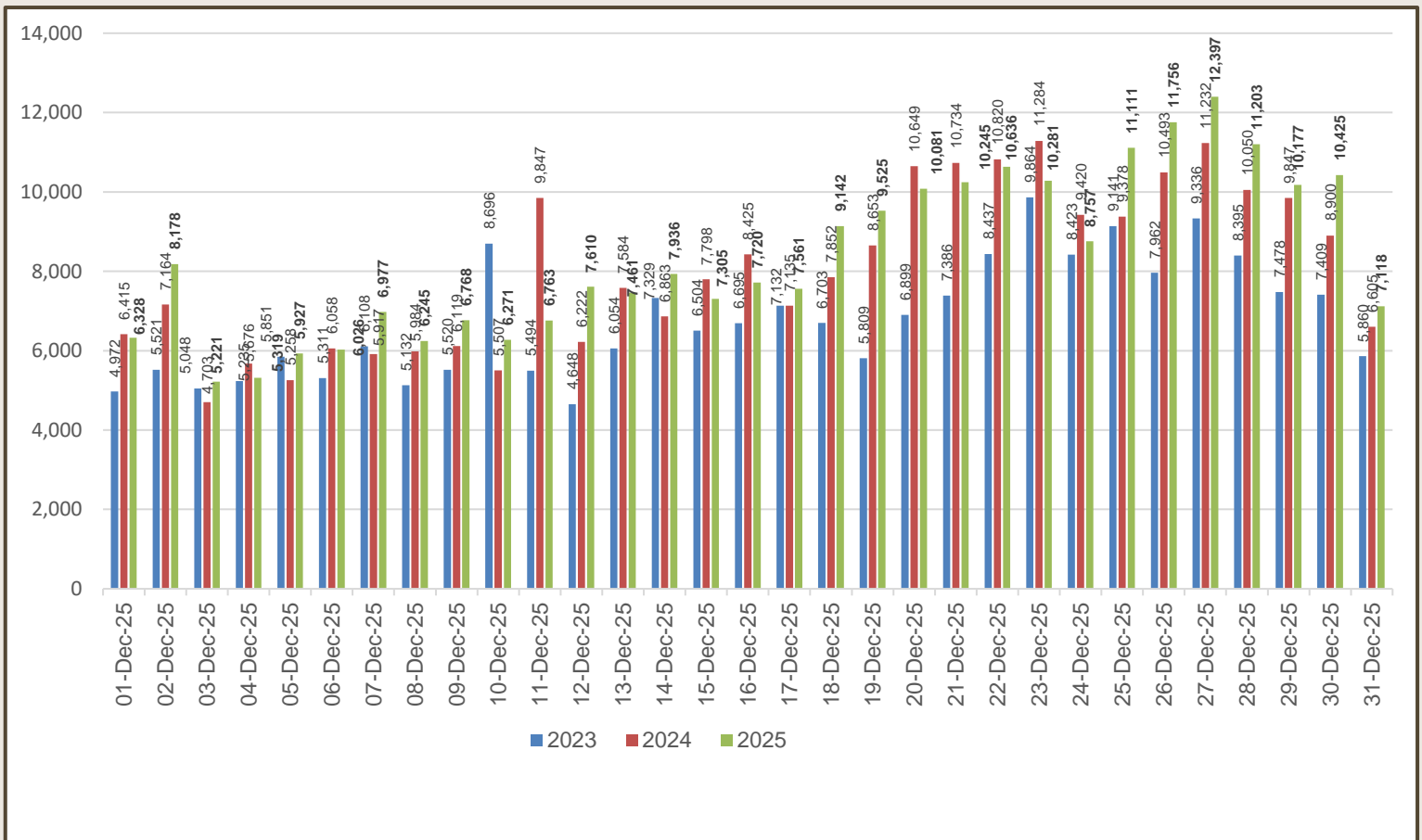




### Daily distribution of tourist arrivals, 01<sup>st</sup> to 31<sup>st</sup> December 2025

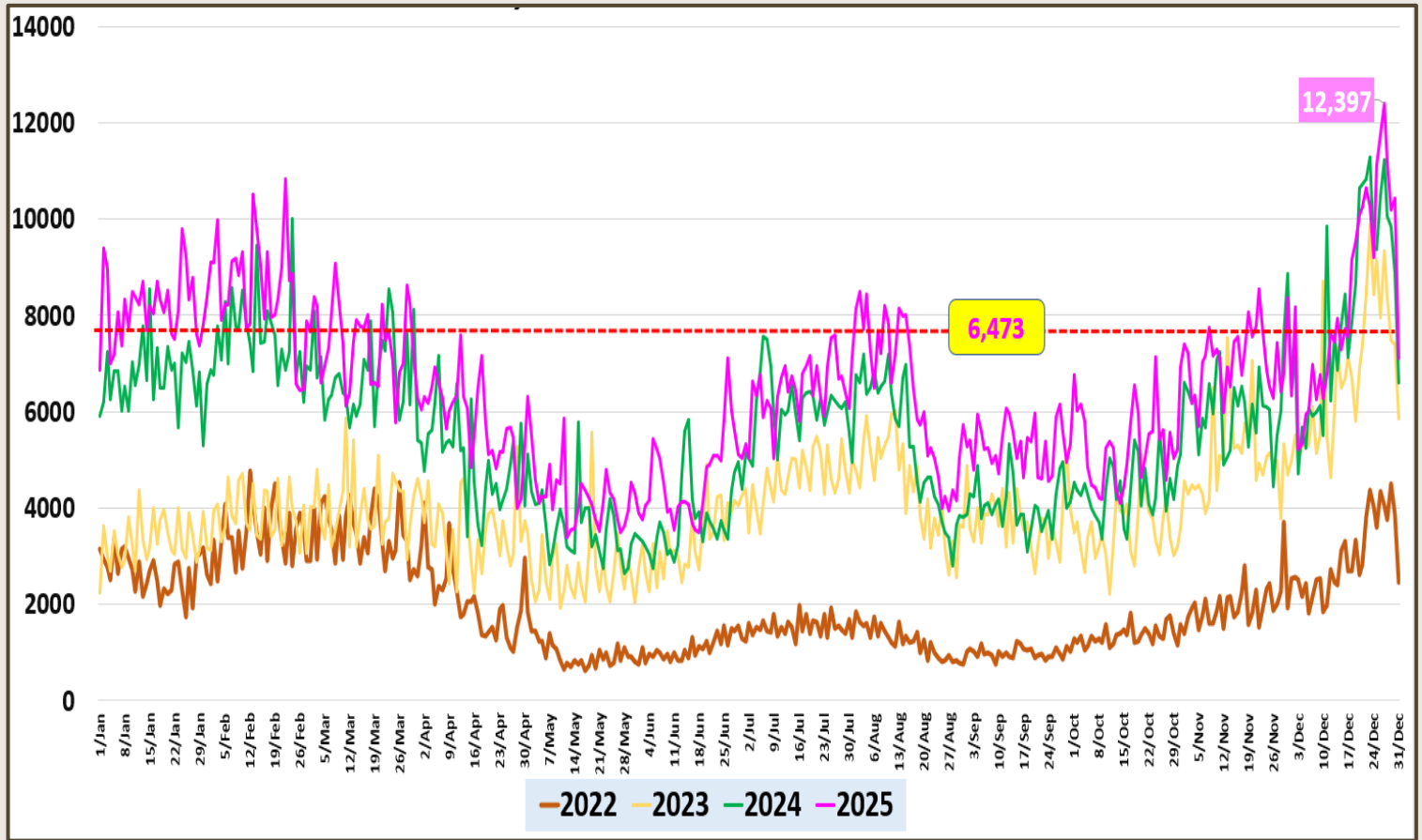


### Number of tourist arrivals, 2023, 2024 & 2025 (01<sup>st</sup> to 31<sup>st</sup> December)

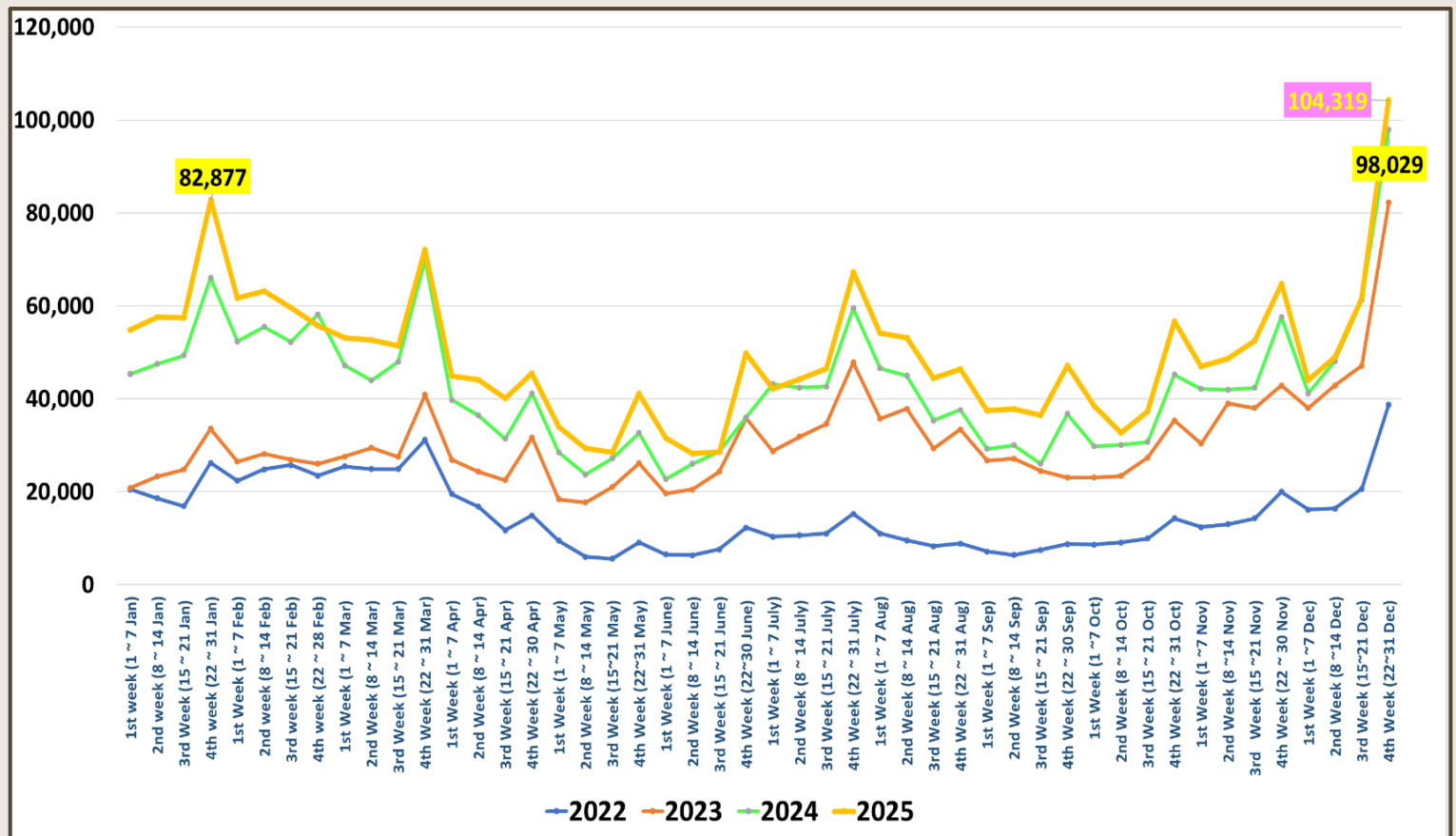




### Daily trend of tourist arrivals, 2022 - 2025













### Weekly distribution of tourist arrivals, 2022- 2025





## Top ten source markets, 01<sup>st</sup> to 31<sup>st</sup> December 2025

Rank		Country	Number of tourists	Share %
1		India	56,715	22.0%
2		Russian Federation	27,987	11.0%
3		United Kingdom	20,535	8.0%
4		Germany	16,707	6.0%
5		Australia	14,820	6.0%
6		China	10,364	4.0%
7		United States	8,524	3.0%
8		France	7,270	3.0%
9		Poland	6,870	3.0%
10		Italy	6,482	2.0%
11		Other	82,654	32.0%
		<b>Total</b>	<b>258,928</b>	



## Top twenty source markets, 01<sup>st</sup> January – 31<sup>st</sup> December 2025

Rank	Country	Number of tourists
1	India	531,511
2	United Kingdom	212,277
3	Russian Federation	186,580
4	Germany	147,966
5	China	132,035
6	Australia	109,487
7	France	109,041
8	United States	65,973
9	Netherlands	64,164
10	Bangladesh	59,563
11	Italy	50,430
12	Poland	49,989
13	Canada	46,133
14	Spain	46,038
15	Japan	38,153
16	Maldives	37,165
17	Switzerland	33,624
18	Israel	24,591
19	Malaysia	23,684
20	Pakistan	22,296
	Others	371,821
<b>TOTAL</b>		<b>2,362,521</b>