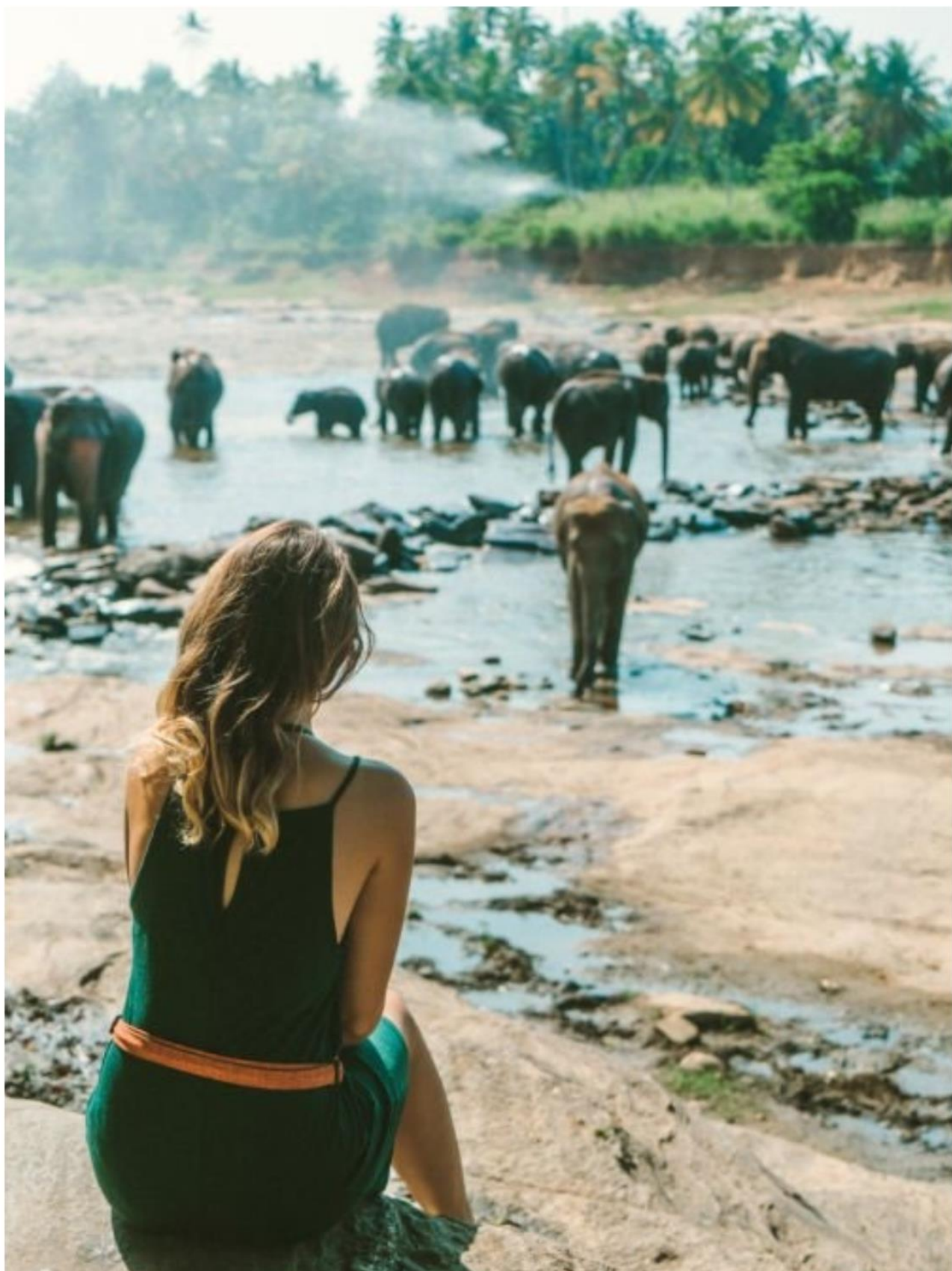


JUNE

2025



# Weekly Tourist Arrivals Report



# SUMMARY REPORT

## Tourist arrivals from 01<sup>st</sup> to 30<sup>th</sup> June 2025

	2018	2024	2025		
Month	Number of Tourists	Number of Tourists	Number of Tourists	Percentage Change (25/24)	Percentage Change (25/18)
January	238,924	208,253	252,761	21.4	5.8
February	235,618	218,350	240,217	10.0	1.9
March	233,382	209,181	229,298	9.62	(1.7)
April	180,429	148,867	174,608	17.3	(3.2)
May	129,466	112,128	132,919	18.5	2.7
June	146,828	113,470	138,241	21.8	(5.8)
July	217,829	187,810			
August	200,359	164,609			
September	149,087	122,140			
October	153,123	135,907			
November	195,582	184,158			
December	253,169	248,592			
TOTAL	2,333,796	2,053,465	1,168,044		



**Tourist arrivals**  
**01<sup>st</sup> to 30<sup>th</sup> June 2025**  
**138,241**



## Daily tourist arrivals, 01<sup>st</sup> to 30<sup>th</sup> June 2025



J  
U  
N  
E

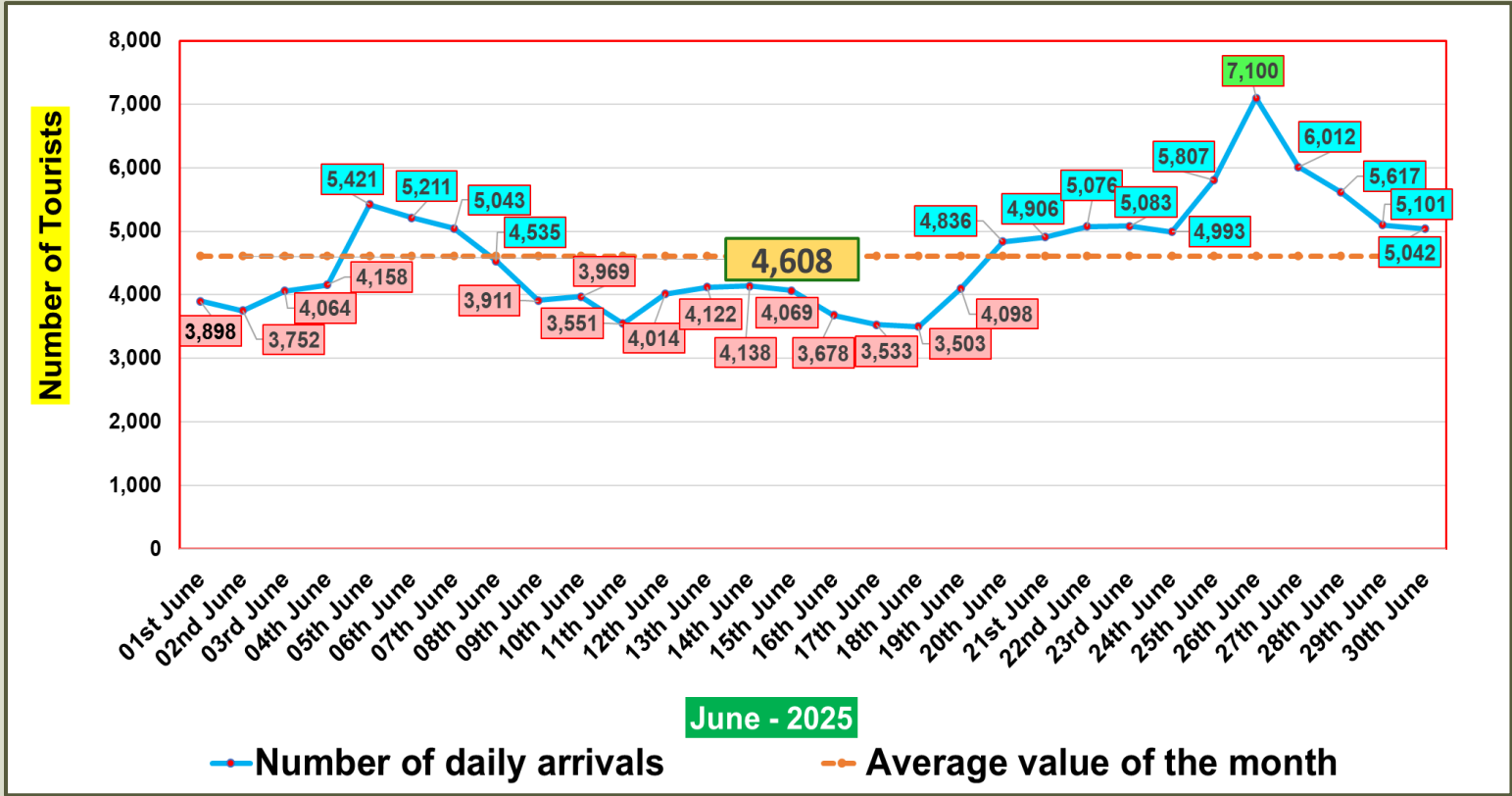
1 <sup>st</sup>	3,898	8 <sup>th</sup>	4,535	15 <sup>th</sup>	4,069	22 <sup>nd</sup>	5,076	29 <sup>th</sup>	5,101
2 <sup>nd</sup>	3,752	9 <sup>th</sup>	3,911	16 <sup>th</sup>	3,678	23 <sup>rd</sup>	5,083	30 <sup>th</sup>	5,042
3 <sup>rd</sup>	4,064	10 <sup>th</sup>	3,969	17 <sup>th</sup>	3,533	24 <sup>th</sup>	4,993		
4 <sup>th</sup>	4,158	11 <sup>th</sup>	3,551	18 <sup>th</sup>	3,503	25 <sup>th</sup>	5,807		
5 <sup>th</sup>	5,421	12 <sup>th</sup>	4,014	19 <sup>th</sup>	4,098	26 <sup>th</sup>	7,100		
6 <sup>th</sup>	5,211	13 <sup>th</sup>	4,122	20 <sup>th</sup>	4,836	27 <sup>th</sup>	6,012		
7 <sup>th</sup>	5,043	14 <sup>th</sup>	4,138	21 <sup>st</sup>	4,906	28 <sup>th</sup>	5,617		

Total	1 <sup>st</sup> to 7 <sup>th</sup>	8 <sup>th</sup> to 14 <sup>th</sup>	15 <sup>th</sup> to 21 <sup>st</sup>	22 <sup>nd</sup> to 28 <sup>th</sup>	29 <sup>th</sup> to 30 <sup>th</sup>
	31,547	28,240	28,623	39,688	10,143

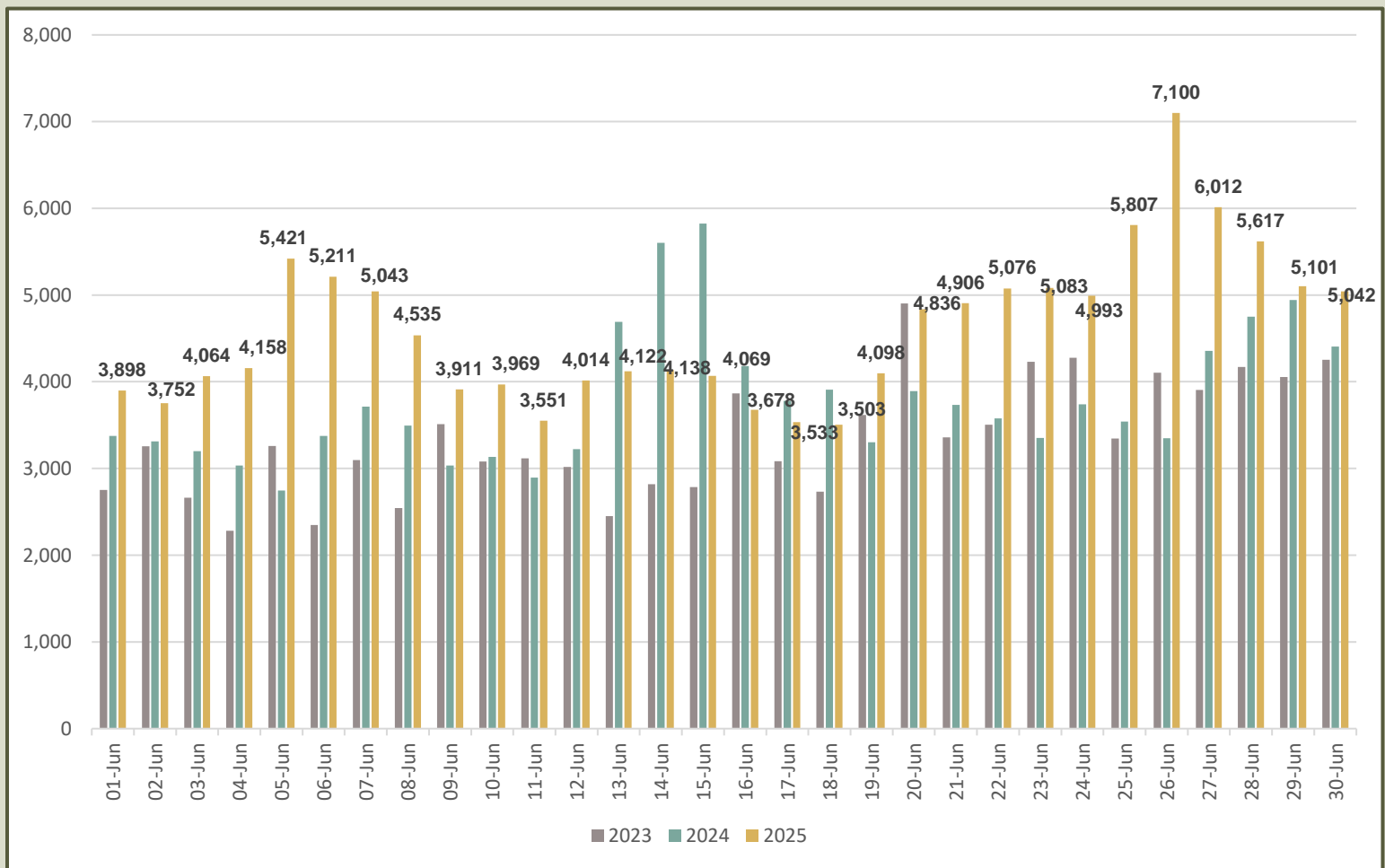




Daily distribution of tourist arrivals, 01<sup>st</sup> to 30<sup>th</sup> June 2025



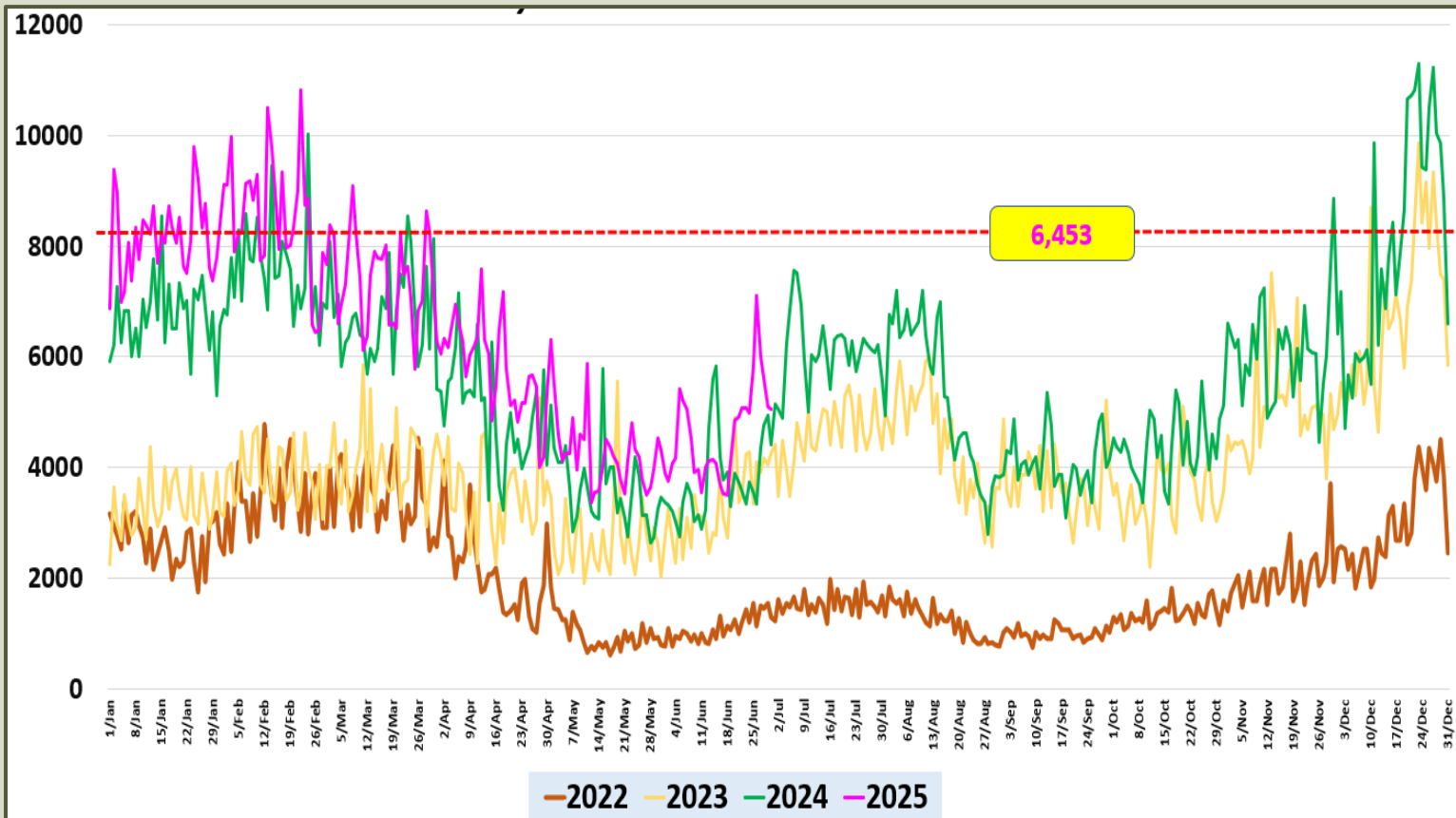
Number of tourist arrivals, 2023, 2024 & 2025 (01<sup>st</sup> to 30<sup>th</sup> June)



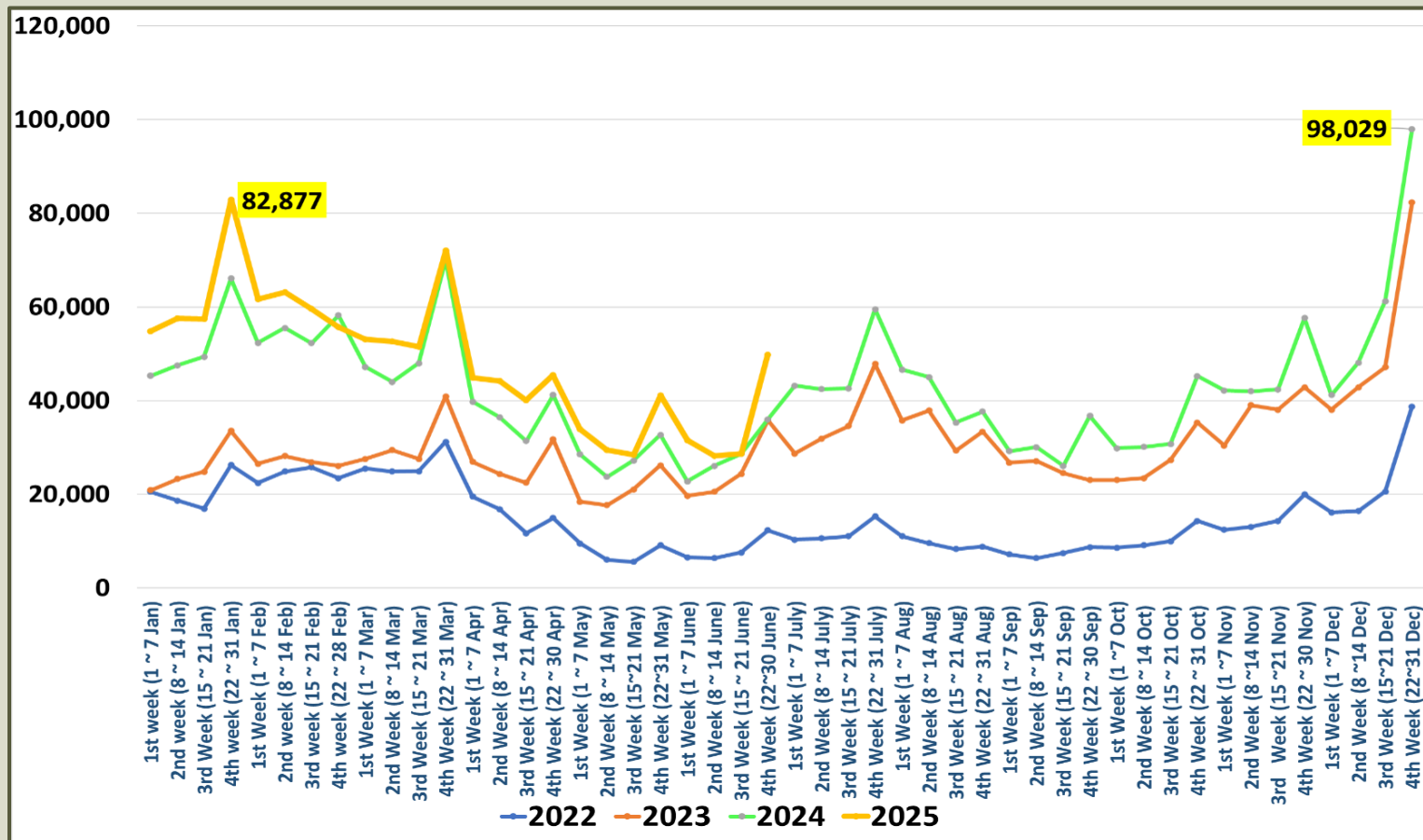




## Daily trend of tourist arrivals, 2022 - 2025













## Weekly distribution of tourist arrivals, 2022- 2025





## Top ten source markets, 01<sup>st</sup> to 30<sup>th</sup> June 2025

Rank		Country	Number of Tourists	Share %
1		India	37,934	27.4%
2		United Kingdom	11,628	8.4%
3		China	8,804	6.4%
4		Australia	7,299	5.3%
5		Pakistan	6,833	4.9%
6		Bangladesh	5,826	4.2%
7		Germany	5,498	4.0%
8		United States	5,422	3.9%
9		France	4,345	3.1%
10		Canada	4,239	3.1%
11		Other	40,413	29.2%
		<b>Total</b>	<b>138,241</b>	



## Top twenty source markets, 01<sup>st</sup> January – 30<sup>th</sup> June 2025

Rank	Country	Number of tourists
1	India	241,994
2	Russian Federation	112,312
3	United Kingdom	107,902
4	Germany	74,576
5	China	65,787
6	France	61,457
7	Australia	51,325
8	United States	34,413
9	Bangladesh	33,137
10	Netherlands	26,139
11	Poland	26,079
12	Canada	24,116
13	Italy	19,557
14	Japan	16,459
15	Maldives	16,453
16	Switzerland	15,582
17	Spain	14,840
18	Pakistan	12,253
19	Israel	11,048
20	Malaysia	11,032
	Others	191,583
	<b>TOTAL</b>	<b>1,168,044</b>