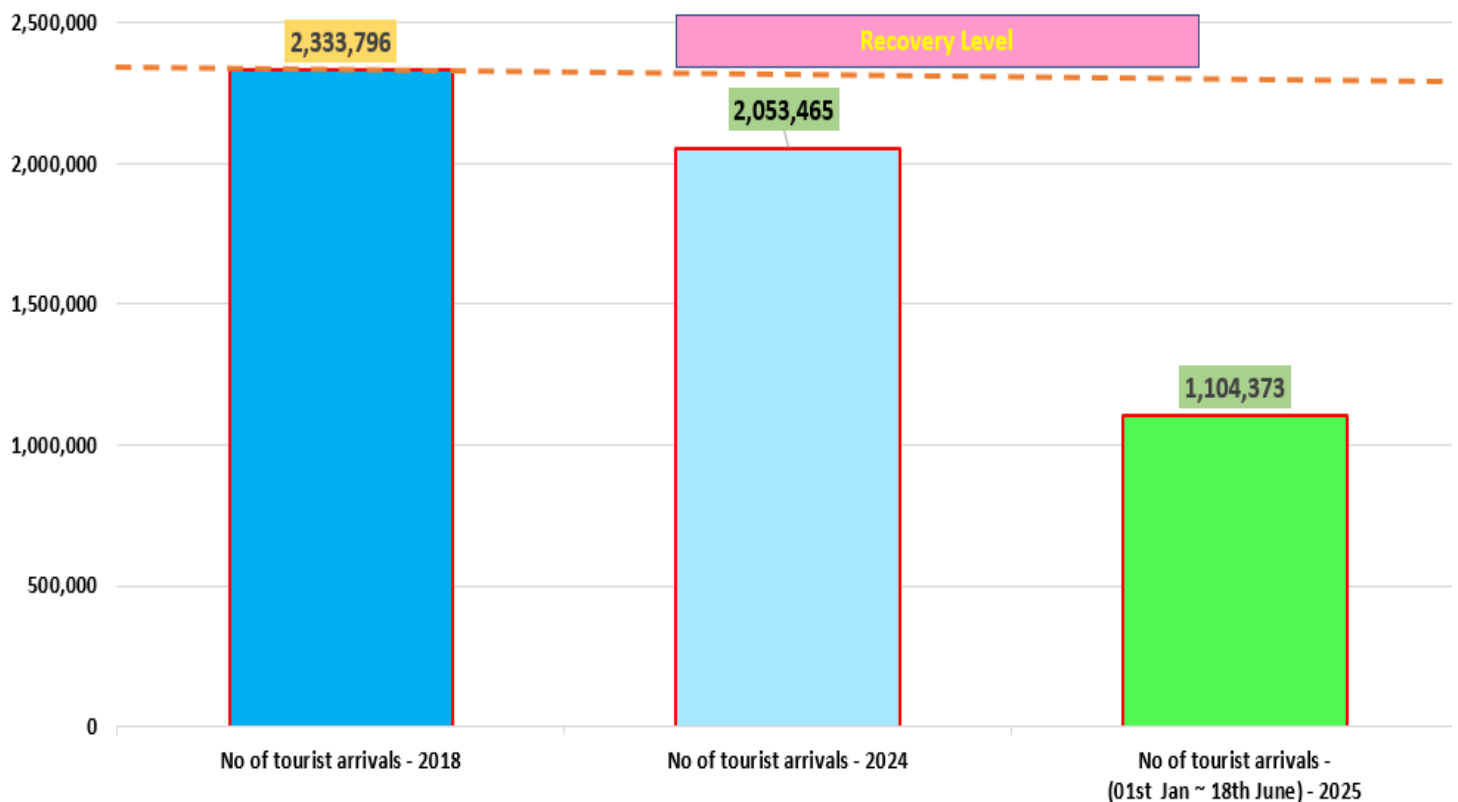


## Summary report on tourist arrivals up to 18<sup>th</sup> June 2025

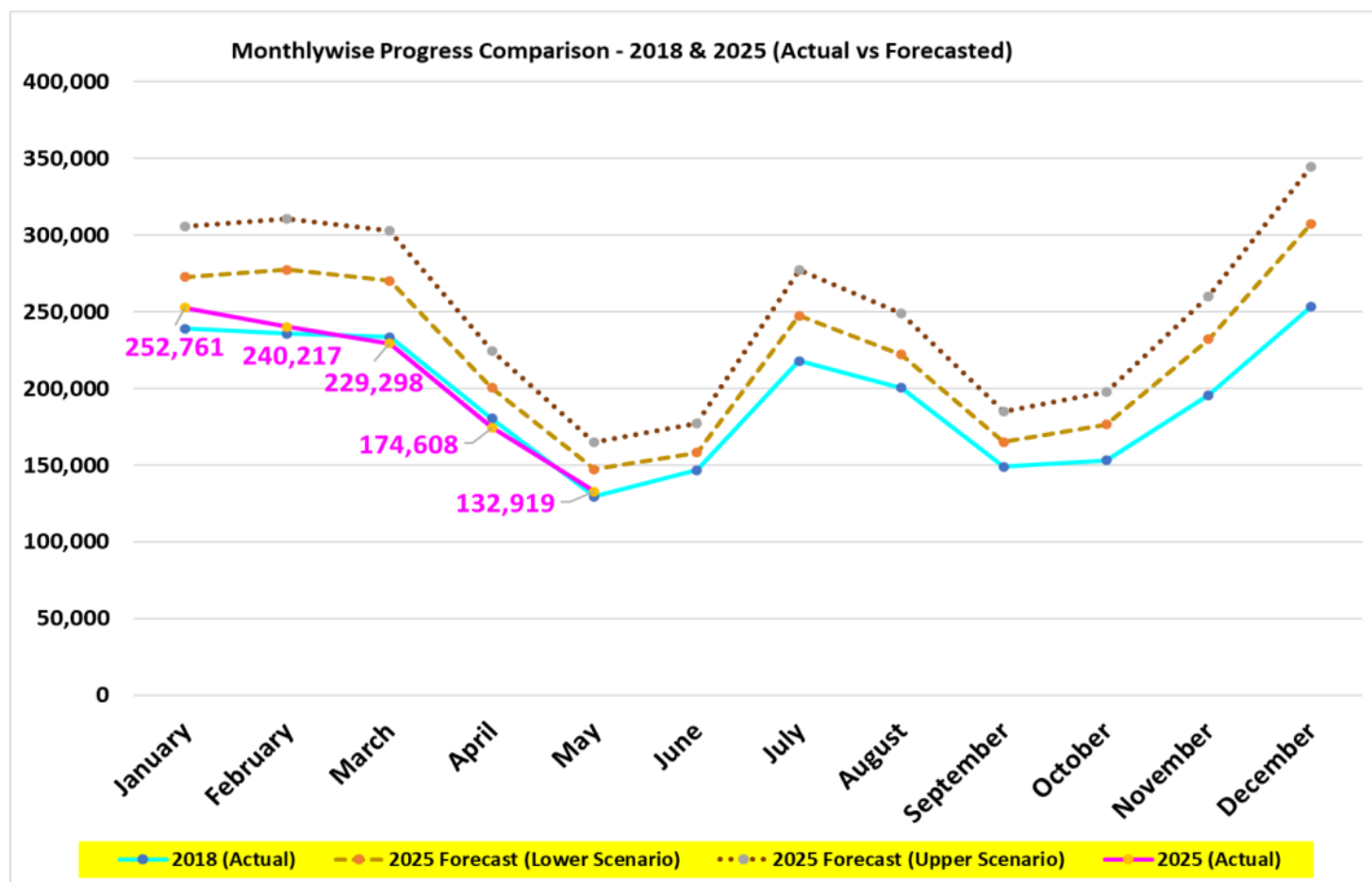
	2018	2024	2025		
Month	Number of Tourists	Number of Tourists	Month	Number of Tourists	percentage Change (25/24) %
January	238,924	208,253	January	252,761	21.4
February	235,618	218,350	February	240,217	10.0
March	233,382	209,181	March	229,298	9.62
April	180,429	148,867	April	174,608	17.3
May	129,466	112,128	May	132,919	18.5
June	146,828	113,470	June (01 <sup>st</sup> ~ 18 <sup>th</sup> )	74,570	
July	217,829	187,810	July		
August	200,359	164,609	August		
September	149,087	122,140	September		
October	153,123	135,907	October		
November	195,582	184,158	November		
December	253,169	248,592	December		
<b>Total</b>	<b>2,333,796</b>	<b>2,053,465</b>		<b>1,104,373</b>	

### Arrival Comparison 2018, 2024 & 2025



## Actuals Vs Forecasted Value

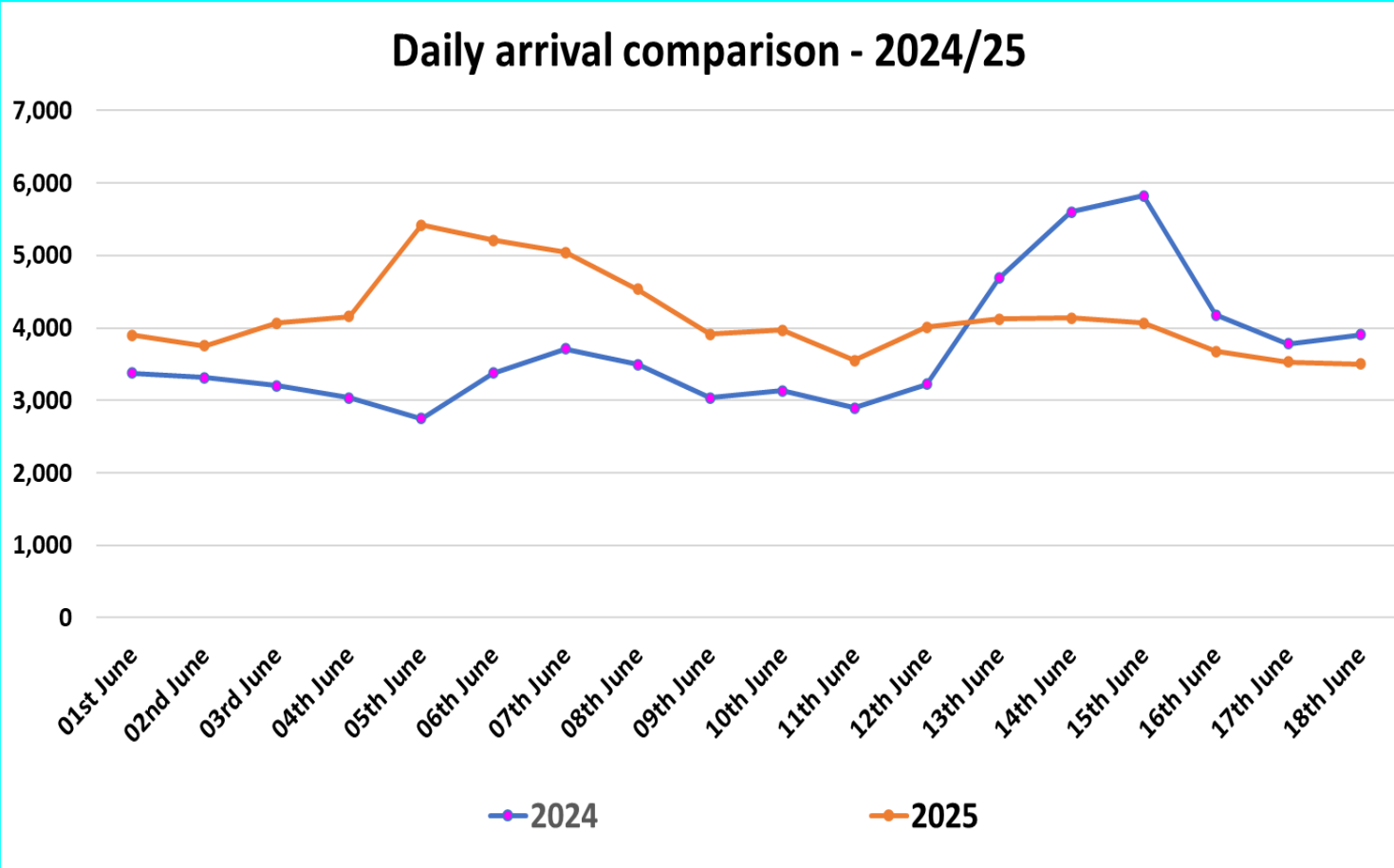
Month	2018 - Actual	Tourism Forecasted - 2025	2025 - Actual	Difference between 2018 & 2025	Difference Between forecasted & actual 2025
January	238,924	305,687	252,761	+ 13,837	-52,926
February	235,618	310,937	240,217	+ 4,599	-70,720
March	233,382	302,803	229,298	- 4,084	-73,505
April	180,429	224,710	174,608	-5,821	-50,102
May	129,466	165,118	132,919	+ 3,453	-32,199
June	146,828	177,257			
July	217,829	277,195			
August	200,359	249,019			
September	149,087	185,043			
October	153,123	197,693			
November	195,582	260,229			
December	253,169	344,309			
	2,333,796	3,000,000			



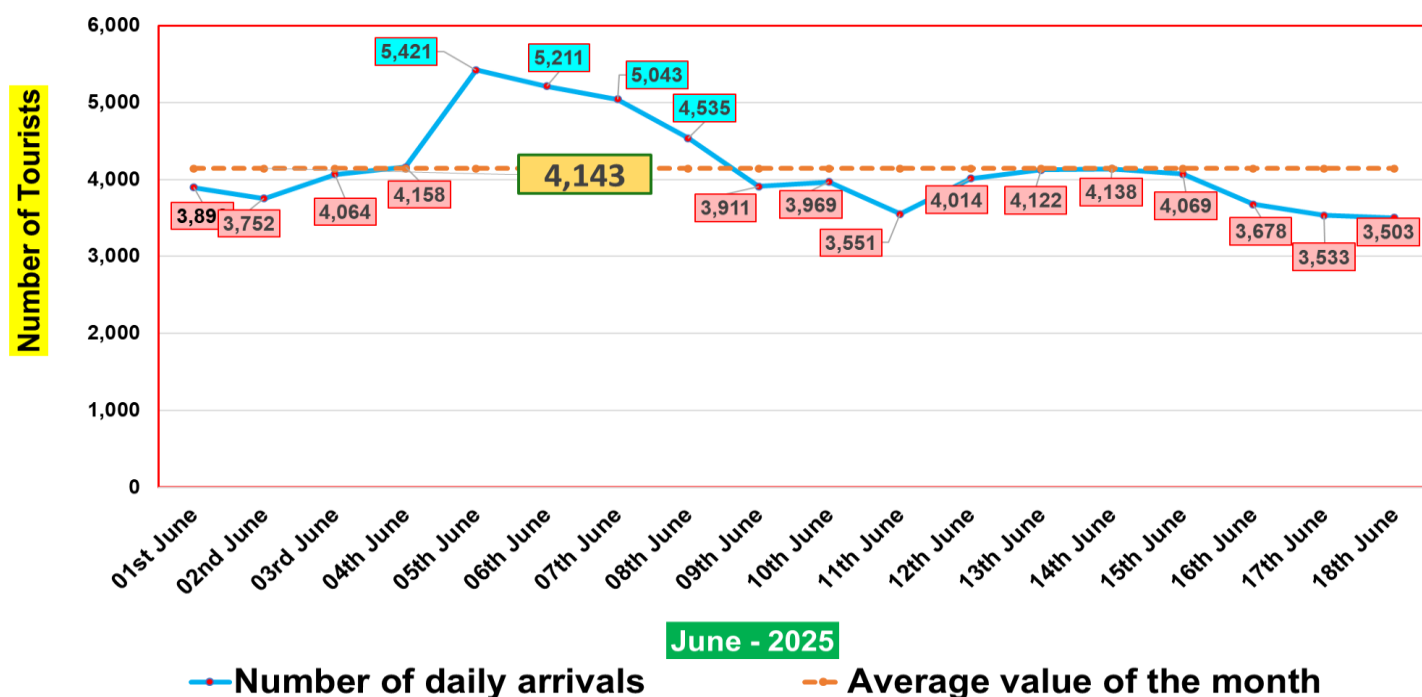
**Number of tourists' arrivals – June (01<sup>st</sup> ~ 18<sup>th</sup>) - 2024 & 2025**

Date	Number of Tourists 2024	Number of Tourists 2025
01 <sup>st</sup> June	3,374	3,898
02 <sup>nd</sup> June	3,312	3,752
03 <sup>rd</sup> June	3,199	4,064
04 <sup>th</sup> June	3,035	4,158
05 <sup>th</sup> June	2,746	5,421
06 <sup>th</sup> June	3,376	5,211
07 <sup>th</sup> June	3,713	5,043
08 <sup>th</sup> June	3,495	4,535
09 <sup>th</sup> June	3,035	3,911
10 <sup>th</sup> June	3,132	3,969
11 <sup>th</sup> June	2,895	3,551
12 <sup>th</sup> June	3,224	4,014
13 <sup>th</sup> June	4,691	4,122
14 <sup>th</sup> June	5,602	4,138
15 <sup>th</sup> June	5,824	4,069
16 <sup>th</sup> June	4,180	3,678
17 <sup>th</sup> June	3,779	3,533
18 <sup>th</sup> June	3,910	3,503
Total	66,522	74,570

**Daily distribution of tourist arrivals, June 2025**



## Daily arrival distribution – Month of June 2025



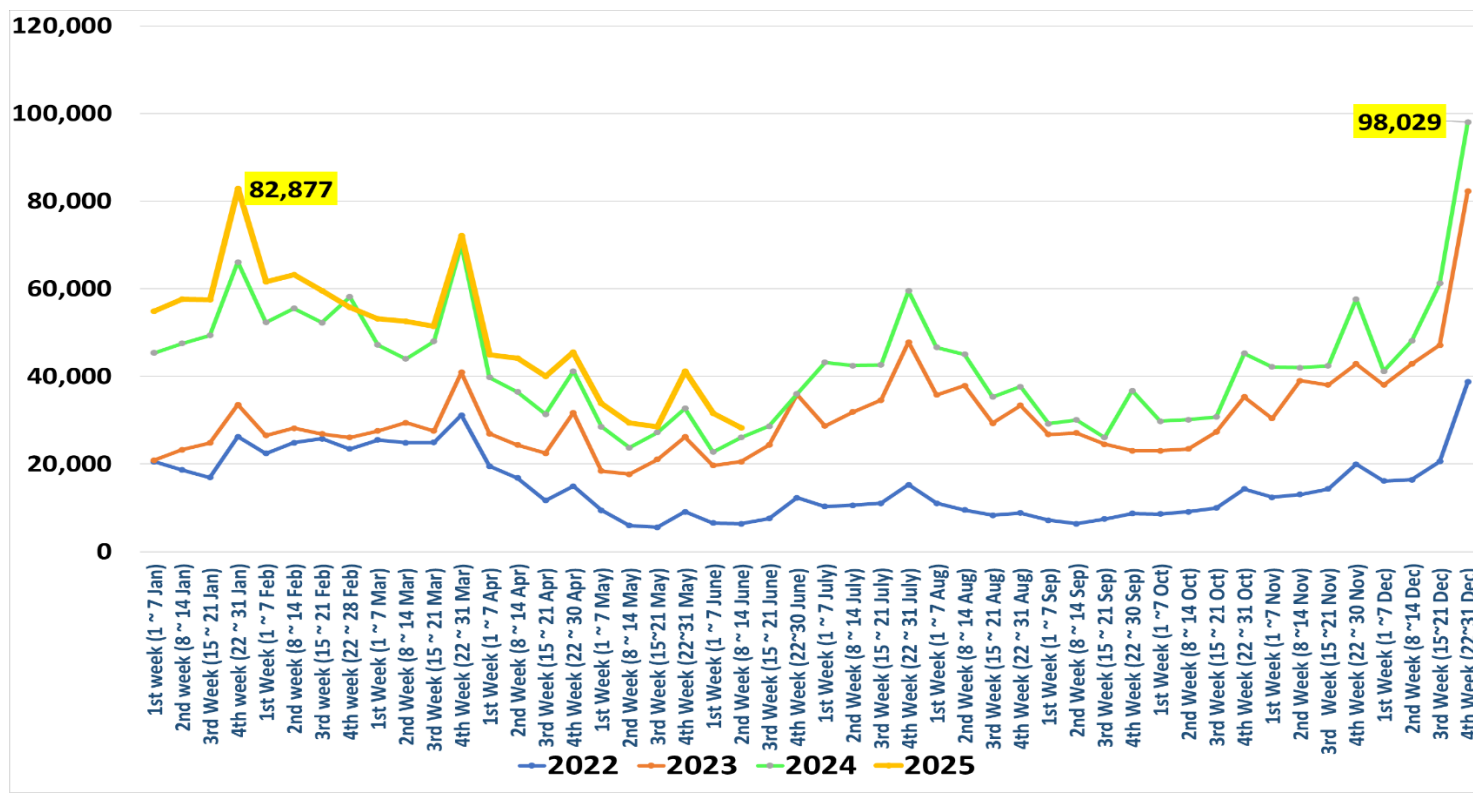
## Weekly tourist arrival distribution- from Jan 2024 to June 2025

Week	Number of tourists	Total
<b>Year 2024</b>		
1 <sup>st</sup> week (1 ~ 7 Jan)- 24	45,303	<b>208,253</b>
2 <sup>nd</sup> week (08 ~ 14 Jan)- 24	47,518	
3 <sup>rd</sup> week (15 ~ 21 Jan)- 24	49,341	
4 <sup>th</sup> week (22 ~ 31 Jan)- 24	66,091	
1 <sup>st</sup> week (1 ~ 7 Feb) - 24	52,361	<b>218,350</b>
2 <sup>nd</sup> week (8 ~ 14 Feb) - 24	55,537	
3 <sup>rd</sup> week (15 ~ 21 Feb) - 24	52,266	
4 <sup>th</sup> week (22 ~ 27 Feb) - 24	58,186	
1 <sup>st</sup> week (1 ~ 7 Mar) - 24	47,221	<b>209,181</b>
2 <sup>nd</sup> week (8 ~ 14 Mar) - 24	43,983	
3 <sup>rd</sup> week (15 ~ 21 Mar) - 24	47,972	
4 <sup>th</sup> week (22 ~ 31 Mar) - 24	70,005	
1 <sup>st</sup> week (1 ~ 7 April) - 24	39,797	<b>148,867</b>
2 <sup>nd</sup> week (8 ~ 14 April) - 24	36,471	
3 <sup>rd</sup> week (15 ~ 21 April) - 24	31,398	
4 <sup>th</sup> week (22 ~ 30 April) - 24	41,201	
1 <sup>st</sup> week (1 ~ 7 May) - 24	28,526	<b>112,128</b>
2 <sup>nd</sup> week (8 ~ 14 May) - 24	23,713	
3 <sup>rd</sup> Week ( 15 ~ 21 May) - 24	27,192	
4 <sup>th</sup> Week (22 ~ 31 May) - 24	32,697	

Week	Number of tourists	Total
Year 2024		
1st week (1 ~ 7 June) - 24	22,755	113,470
2 <sup>nd</sup> week (8 ~ 14 June) - 24	26,074	
3 <sup>rd</sup> week (15 ~ 21 June) - 24	28,623	
4 <sup>th</sup> week (22 ~ 30 June) - 24	36,018	
1st week (1 ~ 7 July) - 24	43,203	187,810
2 <sup>nd</sup> week (8 ~ 14 July) - 24	42,440	
3 <sup>rd</sup> week (15 ~ 21 July) - 24	42,649	
4 <sup>th</sup> week (22 ~ 31 July) - 24	59,518	
1st week (1 ~ 7 Aug) - 24	46,617	164,609
2 <sup>nd</sup> week (8 ~ 14 Aug) - 24	45,016	
3 <sup>rd</sup> week (15 ~ 21 Aug) - 24	35,338	
4 <sup>th</sup> week (22 ~ 31 Aug) - 24	37,638	
1st week (1 ~ 7 Sep) - 24	29,239	122,140
2 <sup>nd</sup> week (8 ~ 14 Sep) - 24	30,057	
3 <sup>rd</sup> week (15 ~ 21 Sep) - 24	26,070	
4 <sup>th</sup> week (22 ~ 30 Sep) - 24	36,774	
1st week (1 ~ 7 Oct) - 24	29,814	135,907
2 <sup>nd</sup> week (8 ~ 14 Oct) - 24	30,103	
3 <sup>rd</sup> week (15 ~ 21 Oct) - 24	30,751	
4 <sup>th</sup> week (22 ~ 31 Oct) - 24	45,239	
1st week (01 ~ 07 Nov) - 24	42,148	184,158
02 <sup>nd</sup> week (08 ~ 14 Nov) - 24	42,006	
03 <sup>rd</sup> week (15 ~ 21 Nov) - 24	42,376	
04 <sup>th</sup> week (22 ~ 30 Nov) - 24	57,628	
1st week (01 ~ 07 Dec) - 24	41,191	248,592
2 <sup>nd</sup> week (08 ~ 14 Dec) - 24	48,126	
3 <sup>rd</sup> week (15 ~ 21 Dec) - 24	61,246	
4 <sup>th</sup> week (22 ~ 31 Dec) - 24	98,029	
Week	Number of tourists	Total
Year 2025		
1 <sup>st</sup> week (1 ~ 7 Jan)- 25	54,851	252,761
2 <sup>nd</sup> week (8 ~ 14 Jan)- 25	57,560	
3 <sup>rd</sup> week (15 ~ 21 Jan)- 25	57,473	
4 <sup>th</sup> Week (22 ~ 31 Jan) - 25	82,877	
1 <sup>st</sup> week (1 ~ 7 Feb)- 25	61,664	240,217
2 <sup>nd</sup> week (8 ~ 14 Feb)- 25	63,163	
3 <sup>rd</sup> week (15 ~ 21 Feb)- 25	59,606	
4 <sup>th</sup> week (22 ~ 28 Feb)- 25	55,784	
1 <sup>st</sup> week (1 ~ 7 Mar) 25	53,113	229,298
2 <sup>nd</sup> week (8 ~ 14 Mar) 25	52,639	
3 <sup>rd</sup> week (15 ~ 21 Mar) 25	51,459	
4 <sup>th</sup> week (22 ~ 31 Mar) 25	72,087	
1 <sup>st</sup> week (1 ~ 7 April) - 25	44,908	174,608
2 <sup>nd</sup> week (8 ~ 14 April) - 25	44,156	
3 <sup>rd</sup> week (15 ~ 21 April) - 25	40,085	
4 <sup>th</sup> week (22 ~ 30 April) - 25	45,459	
1st week (1 ~ 7 May) - 25	33,911	132,919
2nd week (8 ~ 14 May) - 25	29,417	
3rd week (15 ~ 21 May) - 25	28,457	
4th week (22 ~ 31 May) - 25	41,134	

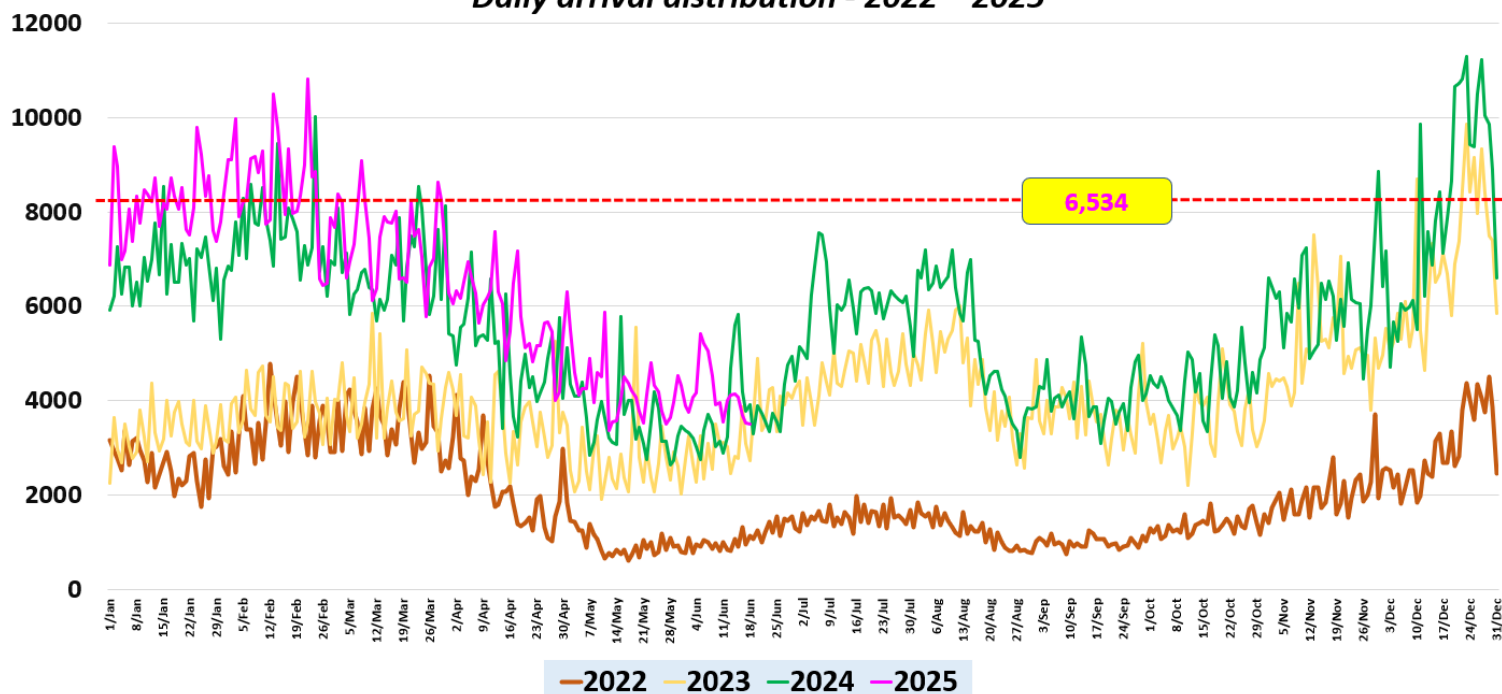
Week	Number of tourists	Total
Year 2025		
1st week (1 ~ 7 June) - 25	31,547	74,570
2 <sup>nd</sup> week (8 ~ 14 June) - 25	28,240	
3 <sup>rd</sup> week (15 ~18 June) - 25	14,783	

### Weekly distribution of tourist arrivals – 2022, 2023, 2024 & 2025



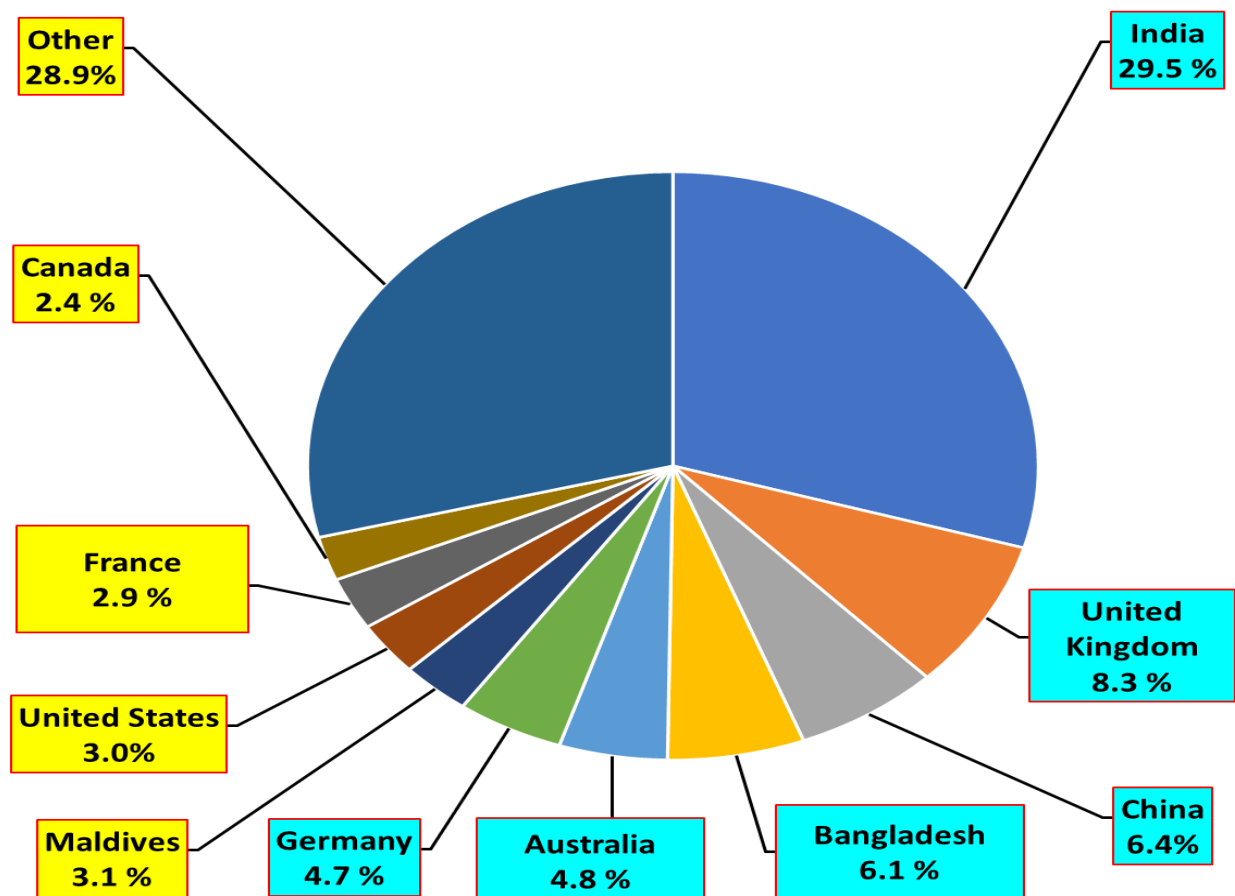
### Daily distribution of tourist arrivals – 2022, 2023, 2024 & 2025

#### *Daily arrival distribution - 2022 ~ 2025*



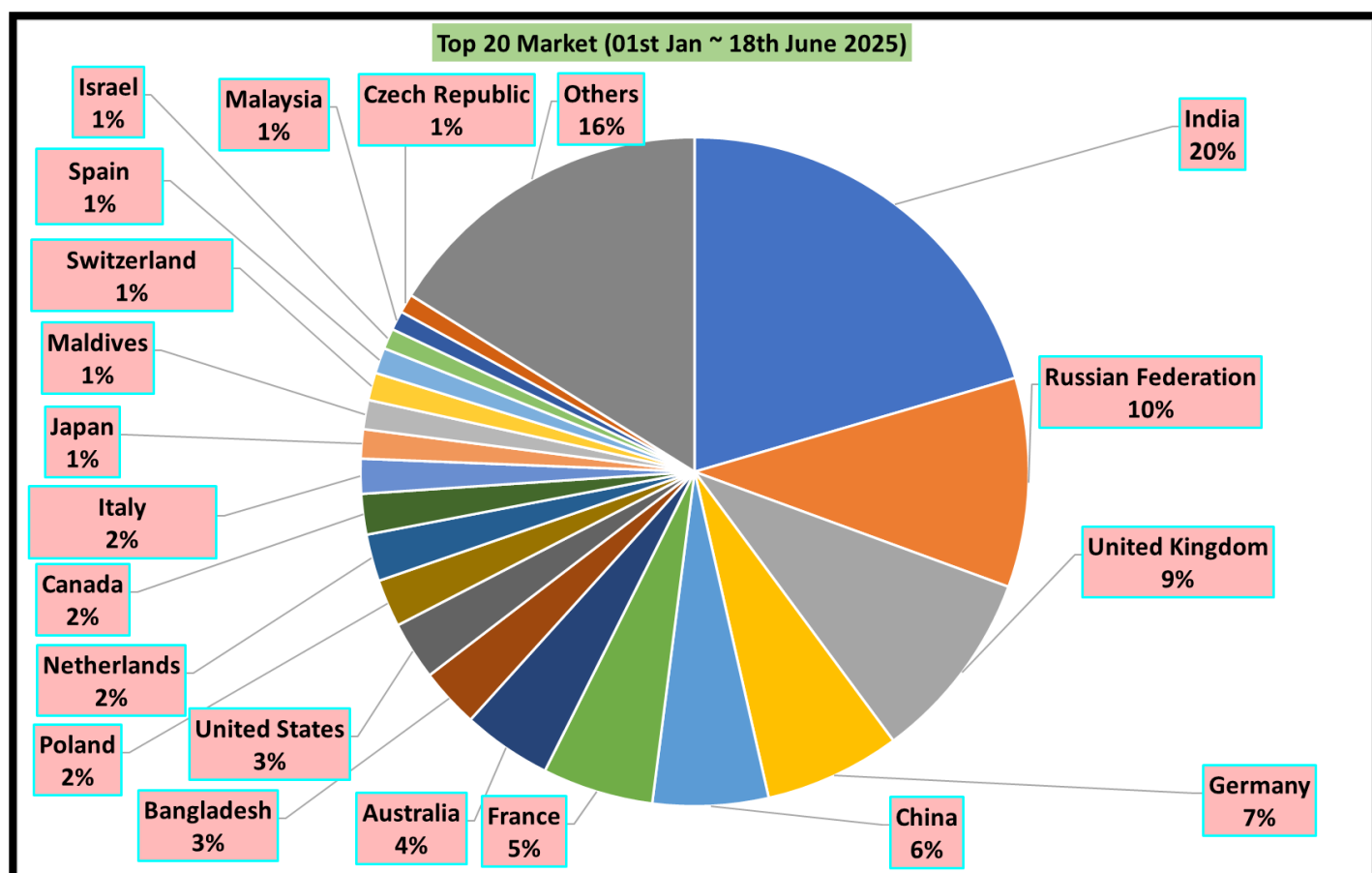
## Top ten source markets - June (01<sup>st</sup> ~ 18<sup>th</sup>) - 2025

Rank	Country	Number of tourists
1	India	22,000
2	United Kingdom	6,158
3	China	4,789
4	Bangladesh	4,515
5	Australia	3,577
6	Germany	3,526
7	Maldives	2,285
8	United States	2,202
9	France	2,155
10	Canada	1,802
11	Other	21,561
	<b>TOTAL</b>	<b>74,570</b>

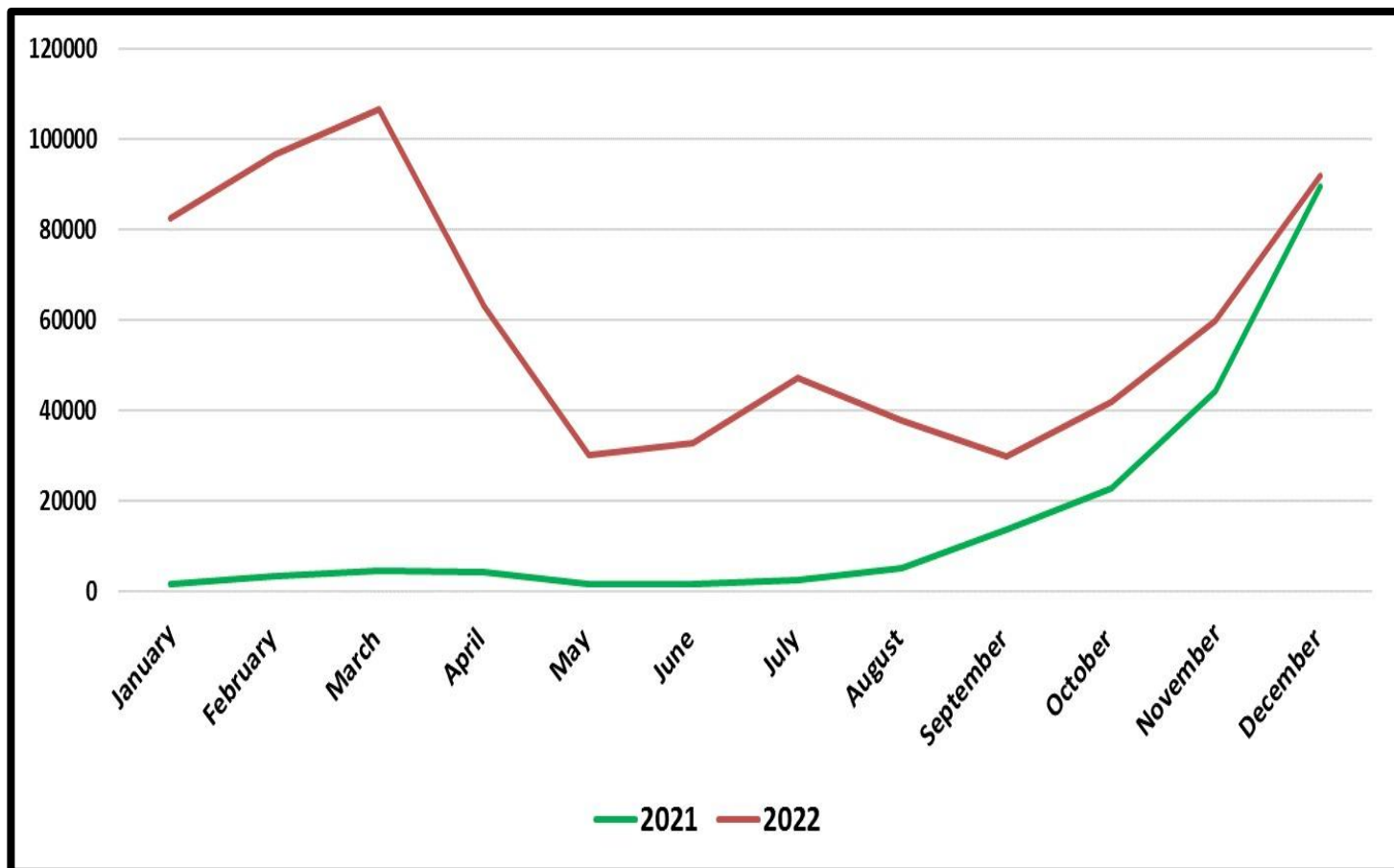


## Top twenty source markets – 01<sup>st</sup> Jan ~ 18<sup>th</sup> Jun - 2025

Rank	Country	Number of tourists
1	India	226,060
2	Russian Federation	111,736
3	United Kingdom	102,432
4	Germany	72,604
5	China	61,772
6	France	59,267
7	Australia	47,603
8	Bangladesh	31,826
9	United States	31,193
10	Poland	25,405
11	Netherlands	25,066
12	Canada	21,679
13	Italy	18,564
14	Japan	15,585
15	Maldives	15,581
16	Switzerland	14,685
17	Spain	13,711
18	Israel	10,899
19	Malaysia	10,277
20	Czech Republic	10,135
	Others	178,293
	<b>TOTAL</b>	<b>1,104,373</b>



## Number of tourist arrivals by month 2021 & 2022



## Number of tourist arrivals from top twenty source markets – 2018 & 2019

