



WEEKLY TOURIST ARRIVALS REPORT DECEMBER 2023



SUMMARY REPORT

Tourist arrivals from 01st to 28th December 2023

2022		2023		Percentage Change (23/22)%
Month	Number of Tourists	Month	Number of Tourists	
January	82,327	January	102,545	24.6
February	96,507	February	107,639	11.5
March	106,500	March	125,495	17.8
April	62,980	April	105,498	67.5
May	30,207	May	83,309	175.8
June	32,856	June	100,388	205.5
July	47,293	July	143,039	202.4
August	37,760	August	136,405	261.2
September	29,802	September	111,938	275.6
October	42,026	October	109,199	159.8
November	59,759	November	151,496	153.5
December	91,961	December (01 st to 28 th)	189,605	-
TOTAL	719,978	-	1,466,556	-



Tourist arrivals | 01st to 28th December 2023

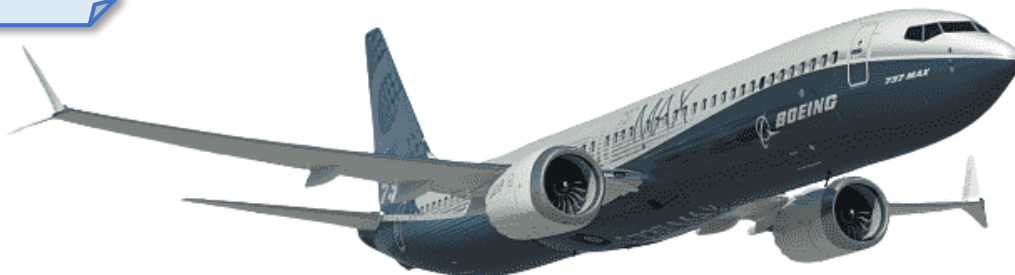
189,605



Daily tourist arrivals, 01st to 28th December 2023

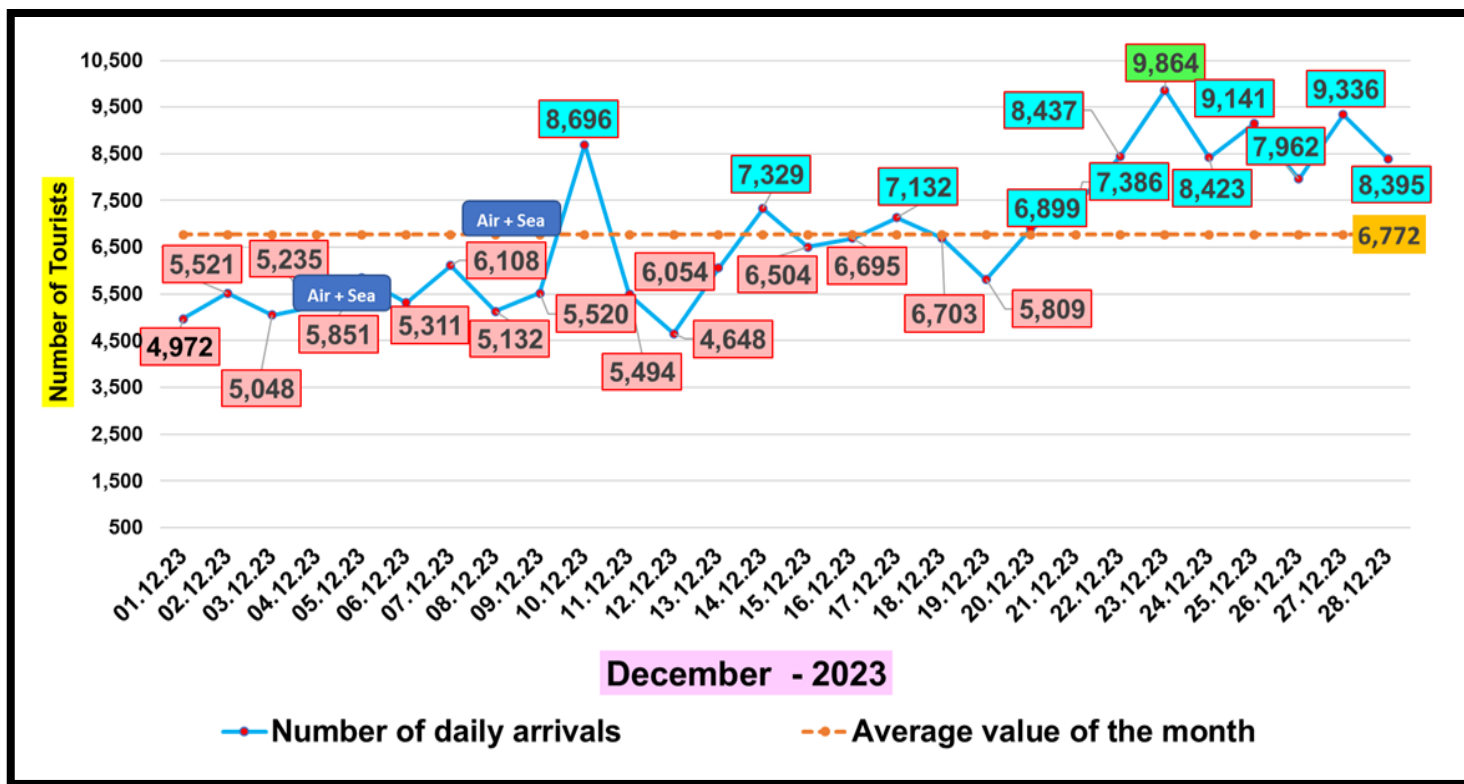
December 2023

01 4,972	02 5,521	03 5,048	04 5,235	05 5,851	06 5,311	07 6,108	TOTAL (1 st to 7 th) 38,046
08 5,132	09 5,520	10 8,696	11 5,494	12 4,648	13 6,054	14 7,329	TOTAL (8 th to 14 th) 42,873
15 6,504	16 6,695	17 7,132	18 6,703	19 5,809	20 6,899	21 7,386	TOTAL (15 th to 21 st) 47,128
22 8,437	23 9,864	24 8,423	25 9,141	26 7,962	27 9,336	28 8,395	TOTAL (22 nd to 28 th) 61,558
29	30						

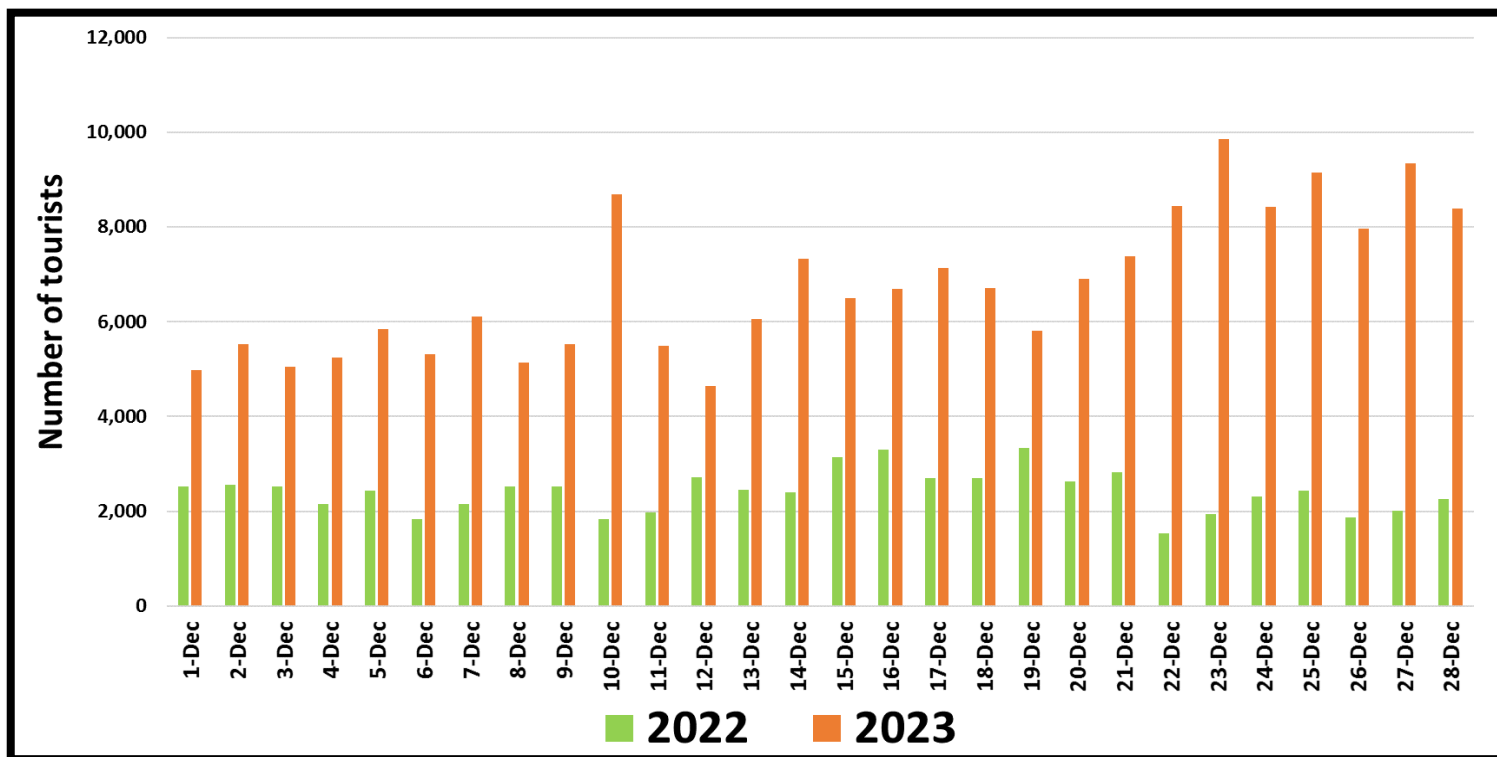




Daily distribution of tourist arrivals, 01st to 28th December 2023

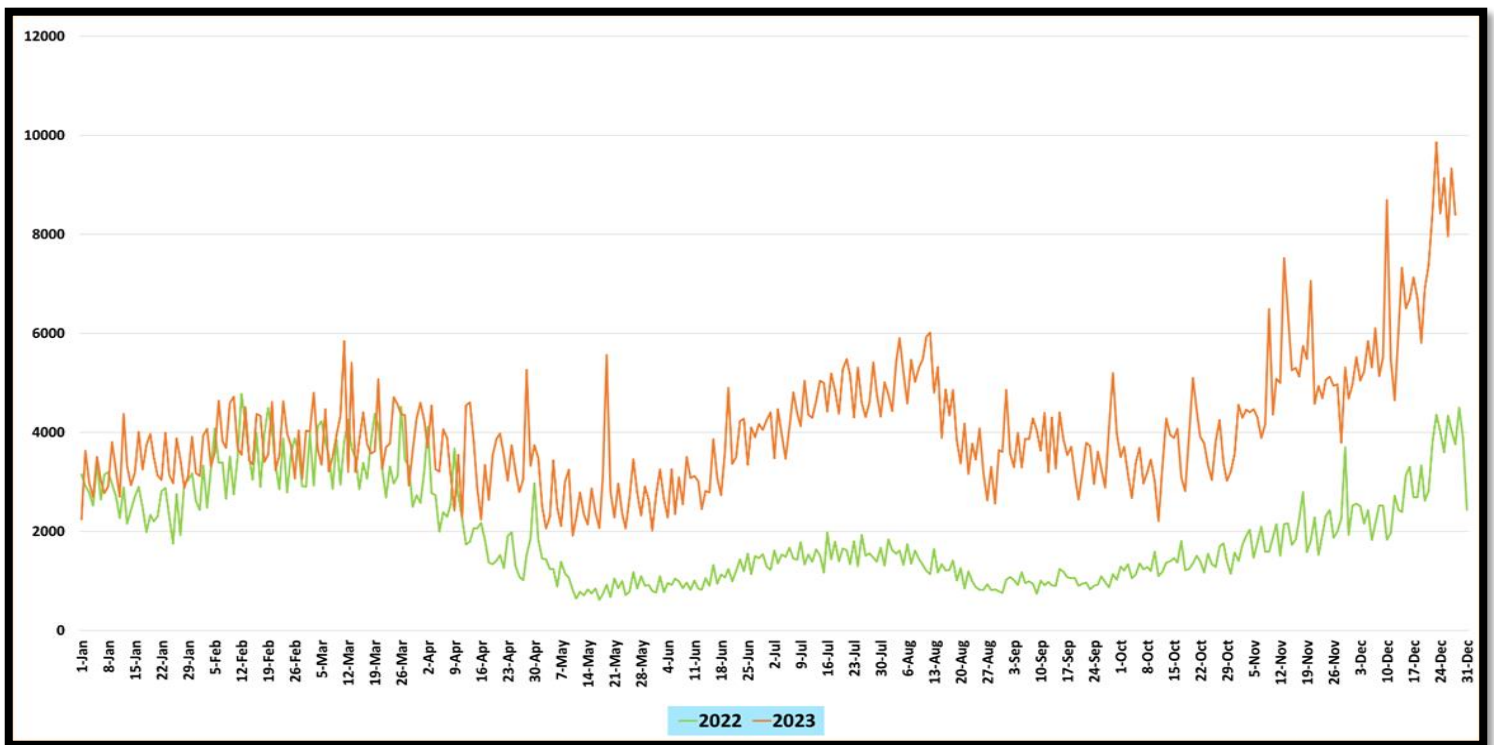


Number of tourist arrivals, 2022 & 2023 (01st to 28th December)

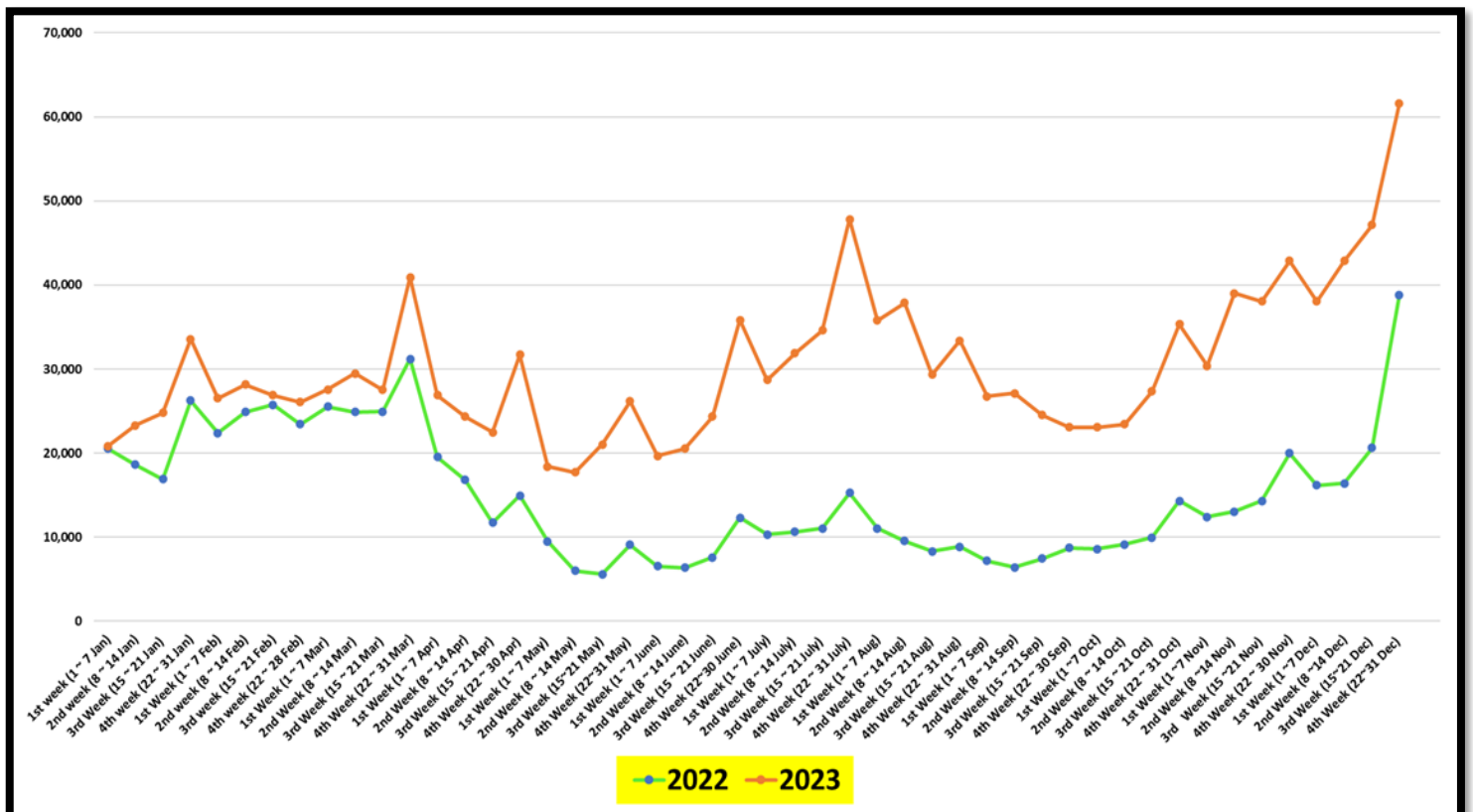




Daily trend of tourist arrivals, 2022 & 2023













Weekly trend of tourist arrivals, 2022 & 2023





Top ten source markets, 01st to 28th December 2023

Rank		Country	Number of Tourists	Share %
1		India	40,057	21%
2		Russian Federation	25,974	14%
3		United Kingdom	17,632	9%
4		Germany	12,197	6%
5		Australia	9,798	5%
6		China	7,597	4%
7		United States	7,334	4%
8		Maldives	5,431	3%
9		France	5,052	3%
10		Canada	3,347	2%
11		Other	55,186	29%
		Total	189,605	100.00