

**DECEMBER  
2020**

# **MONTHLY TOURIST ARRIVALS REPORT**

**SRI LANKA TOURISM DEVELOPMENT AUTHORITY**

[www.sltda.lk](http://www.sltda.lk)

Photo courtesy of SLTDA, SLRC Lovingly Sri Lanka programme



## SUMMARY

The total number of international tourist arrivals to Sri Lanka from **January to December 2020** was 507,704. No tourist arrivals have been recorded since April to 27<sup>th</sup> December due to the termination of all passenger flight & ship arrivals into Sri Lanka from 18<sup>th</sup> March. Following a nine-month-long travel ban imposed due to the pandemic situation, 393 tourists from Ukrain arrived in the island in a series of charters under a pilot project starting from 28<sup>th</sup> December. As at 31st December 2020, 507,704 of tourists had visited Sri Lanka for this year. It is a decline of 73.5% over last year when 1,913,702 of tourists has visited the country during the same period.

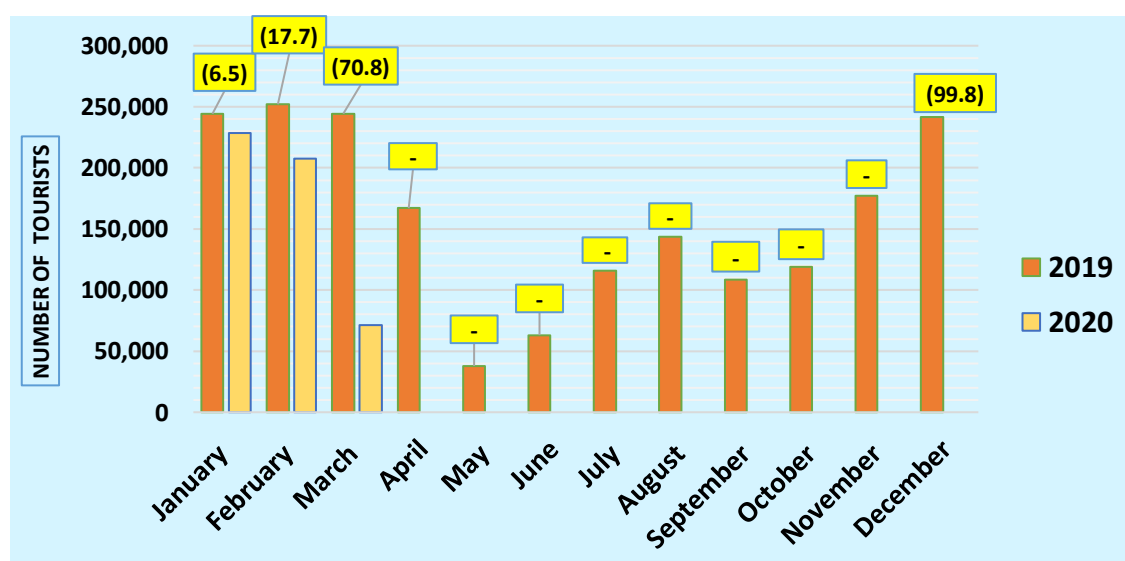
The largest source market recorded from January to December was India, followed by the United Kingdom and Russian Federation.

Almost 95 % of tourists travelled by air to Sri Lanka.

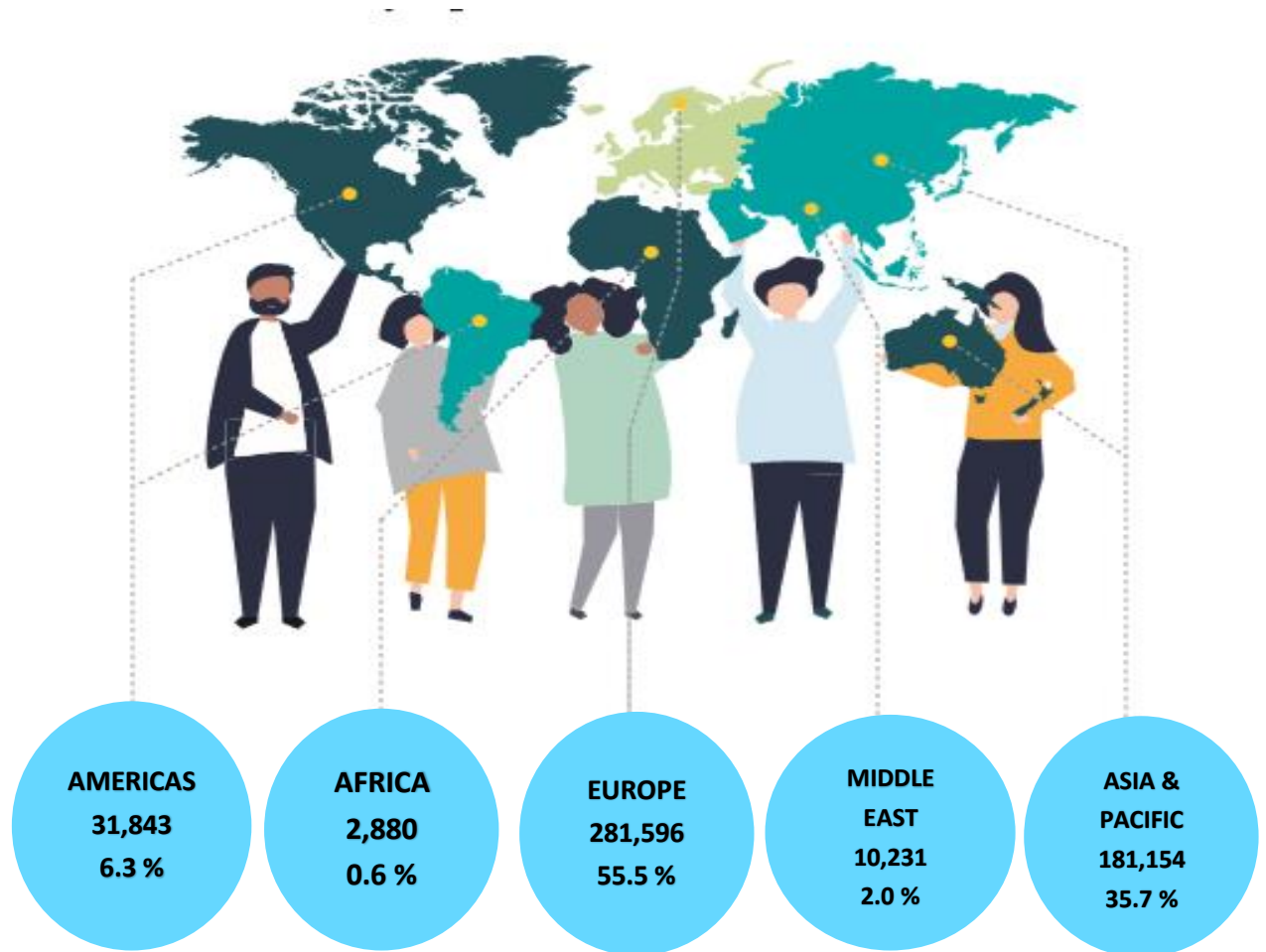
Month	2019	2020	% change 2019/20
January	244,239	228,434	(6.5)
February	252,033	207,507	(17.7)
March	244,328	71,370	(70.8)
April	166,975	0	-
May	37,802	0	-
June	63,072	0	-
July	115,701	0	-
August	143,587	0	-
September	108,575	0	-
October	118,743	0	-
November	176,984	0	-
December	241,663	393	(99.8)
<b>Total</b>	<b>1,913,702</b>	<b>507,704</b>	<b>(73.5)</b>



**Tourist Arrivals – December**  
**393**



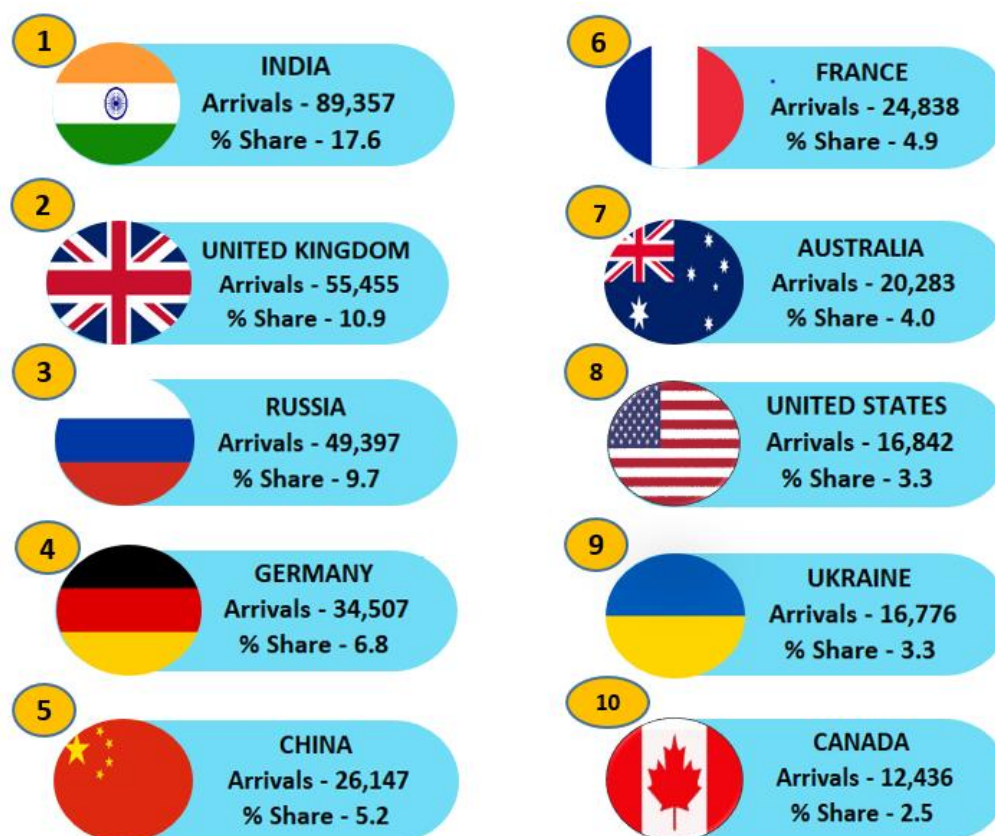
## TOURIST ARRIVALS BY REGION AND PERCENTAGE SHARE JANUARY ~ DECEMBER 2020



Europe became the largest source of tourist traffic to Sri Lanka with 55.5 % of the total traffic received from January to December 2020. Asia and Pacific accounted for 35.7% of the total traffic, Americas 6.3 %, Middle East 2.0 % and Africa 0.6%. In comparison to January - December last year the highest decline of 80.9 % was recorded for Africa while Asia & Pacific recorded a decline of 78.4 %. Middle East recorded a decline of 76.8 % whereas Americas recorded a decline of 75%. A decline of 68.3 % was recorded from Europe. The effect of the outbreak of COVID 19 is clearly evident as all countries have recorded a decline in arrivals from mid of February. However, country wise it is noteworthy that arrivals from Kazakhstan have recorded the lowest decline in arrivals (2.8 %) while the highest decline in arrivals (92.9 %) have recorded from Kenya.

## TOP TEN SOURCE MARKETS – JANUARY ~ DECEMBER 2020

India, United Kingdom, Russia, Germany and China were Sri Lanka's top five international tourist generating markets in the period from January to December this year. India was the largest source of tourist traffic to Sri Lanka with 17.6 % of the total traffic received in above period. United Kingdom accounted for 10.9 % of the total traffic; while Russian Federation, Germany and China accounted for 9.7 %, 6.8 % and 5.2 % respectively. Comparing the top ten markets, the effect of the outbreak of COVID 19 is clearly evident as all countries have recorded a decline in arrivals. It is noteworthy that China has recorded the highest at (84.4 %).



Rank	Country of Residence	Tourist Arrivals from January to December 2020			Tourist Arrivals January to Dec 2019	% Change Jan ~ Dec 2020/2019
		By Air	By Sea	Total		
1	India	86,639	2,718	<b>89,357</b>	355,002	(74.8)
2	United Kingdom	49,015	6,440	<b>55,455</b>	198,776	(72.1)
3	Russian Federation	48,457	940	<b>49,397</b>	86,549	(42.9)
4	Germany	32,495	2,012	<b>34,507</b>	134,899	(74.4)
5	China	25,910	237	<b>26,147</b>	167,863	(84.4)
6	France	24,330	508	<b>24,838</b>	87,623	(71.7)
7	Australia	17,896	2,387	<b>20,283</b>	92,674	(78.1)
8	Ukraine	16,436	733	<b>17,169</b>	35,051	(51.0)
9	United States	14,349	2,493	<b>16,842</b>	68,832	(75.5)
10	Canada	11,122	1,314	<b>12,436</b>	48,729	(74.5)

## INTERNATIONAL TOURIST ARRIVALS BY COUNTRY OF RESIDENCE

	January ~ December 2020				
	Tourist Arrivals				
	By Air	By Sea	Total	Total Tourist Arrivals January to December 2019	% Change Jan ~ Dec (2020/19)
<b><u>AMERICAS</u></b>	<b>27,585</b>	<b>4,258</b>	<b>31,843</b>	<b>127,423</b>	<b>(75.0)</b>
<b>North America</b>	<b>25,723</b>	<b>3,904</b>	<b>29,627</b>	<b>119,681</b>	<b>(75.2)</b>
Canada	11,122	1,314	12,436	48,729	(74.5)
Mexico	252	97	349	2,120	(83.5)
United States	14,349	2,493	16,842	68,832	(75.5)
<b>Caribbean &amp; Central America</b>	<b>211</b>	<b>15</b>	<b>226</b>	<b>938</b>	<b>(75.9)</b>
Costa Rica	33	0	33	143	(76.9)
Jamaica	23	2	25	58	(56.9)
Others	155	13	168	737	(77.2)
<b>South America</b>	<b>1,651</b>	<b>339</b>	<b>1,990</b>	<b>6,804</b>	<b>(70.8)</b>
Argentina	352	64	416	1,403	(70.3)
Brazil	675	200	875	2,964	(70.5)
Chile	232	39	271	938	(71.1)
Colombia	190	11	201	713	(71.8)
Others	202	25	227	786	(71.1)
<b><u>AFRICA</u></b>	<b>2,510</b>	<b>370</b>	<b>2,880</b>	<b>15,094</b>	<b>(80.9)</b>
<b><u>North Africa</u></b>	<b>638</b>	<b>51</b>	<b>689</b>	<b>2,780</b>	<b>(75.2)</b>
Morocco	275	36	311	1,031	(69.8)
Sudan	137	6	143	584	(75.5)
Others	226	9	235	1,165	(79.8)
<b><u>Sub-Saharan Africa</u></b>	<b>1,872</b>	<b>319</b>	<b>2,191</b>	<b>12,314</b>	<b>(82.2)</b>
Kenya	106	4	110	1,559	(92.9)
Mauritius	132	38	170	739	(77.0)
Nigeria	25	0	25	172	(85.5)
South Africa	1,144	220	1,364	7,132	(80.9)
Others	465	57	522	2,712	(80.8)

	January ~ December 2020				
	Tourist Arrivals				
	By Air	By Sea	Total	Total Tourist Arrivals January to December 2019	% Change Jan ~ Dec (2020/19)
<b>ASIA &amp; PACIFIC</b>	<b>173,837</b>	<b>7,317</b>	<b>181,154</b>	<b>839,470</b>	<b>(78.4)</b>
<b>North East Asia</b>	<b>36,944</b>	<b>376</b>	<b>37,320</b>	<b>217,477</b>	<b>(82.8)</b>
China	25,910	237	26,147	167,863	(84.4)
Japan	6,613	31	6,644	30,079	(77.9)
South Korea	2,428	71	2,499	12,195	(79.5)
Taiwan	1,949	36	1,985	7,127	(72.1)
Others	44	1	45	213	(78.9)
<b>South East Asia</b>	<b>13,496</b>	<b>1,431</b>	<b>14,927</b>	<b>68,904</b>	<b>(78.3)</b>
Cambodia	372	0	372	2,841	(86.9)
Indonesia	948	166	1,114	4,919	(77.4)
Malaysia	3,433	61	3,494	16,861	(79.3)
Myanmar	473	59	532	3,124	(83.0)
Philippines	3,176	1,073	4,249	14,590	(70.9)
Singapore	2,506	39	2,545	13,871	(81.7)
Thailand	1,857	23	1,880	9,861	(80.9)
Vietnam	699	10	709	2,643	(73.2)
Others	32	0	32	194	(83.5)
<b>Oceania</b>	<b>20,122</b>	<b>2,584</b>	<b>22,706</b>	<b>105,414</b>	<b>(78.5)</b>
Australia	17,896	2,387	20,283	92,674	(78.1)
New Zealand	2,130	194	2,324	12,463	(81.4)
Others	96	3	99	277	(64.3)
<b>South Asia</b>	<b>103,275</b>	<b>2,926</b>	<b>106,201</b>	<b>447,675</b>	<b>(76.3)</b>
Afghanistan	146	0	146	473	(69.1)
Bangladesh	1,963	23	1,986	8,261	(76.0)
Bhutan	208	0	208	343	(39.4)
India	86,639	2,718	89,357	355,002	(74.8)
Iran	645	3	648	3,249	(80.1)
Maldives	9,404	3	9,407	60,278	(84.4)
Nepal	1,248	136	1,384	5,414	(74.4)
Pakistan	3,022	43	3,065	14,655	(79.1)

	January ~ December 2020				
	Tourist Arrivals				
	By Air	By Sea	Total	Total Tourist Arrivals January to December 2019	% Change Jan ~ Dec (2020/19)
<b>EUROPE</b>	<b>265,492</b>	<b>16,104</b>	<b>281,596</b>	<b>887,572</b>	<b>(68.3)</b>
<b>Northern Eur.</b>	<b>68,008</b>	<b>7,138</b>	<b>75,146</b>	<b>267,264</b>	<b>(71.9)</b>
Denmark	4,769	136	4,905	16,869	(70.9)
Finland	2,216	82	2,298	7,028	(67.3)
Norway	2,954	65	3,019	13,446	(77.5)
Sweden	6,899	162	7,061	22,464	(68.6)
United Kingdom	49,015	6,440	55,455	198,776	(72.1)
Others	2,155	253	2,408	8,681	(72.3)
<b>Western Eur.</b>	<b>79,156</b>	<b>3,073</b>	<b>82,229</b>	<b>322,068</b>	<b>(74.5)</b>
Austria	4,188	112	4,300	14,713	(70.8)
Belgium	3,274	97	3,371	14,948	(77.4)
France	24,330	508	24,838	87,623	(71.7)
Germany	32,495	2,012	34,507	134,899	(74.4)
Netherlands	8,492	164	8,656	38,993	(77.8)
Switzerland	6,217	172	6,389	29,981	(78.7)
Others	160	8	168	911	(81.6)
<b>Central / Eastern Europe</b>	<b>98,111</b>	<b>2,655</b>	<b>100,766</b>	<b>196,856</b>	<b>(48.8)</b>
Belarus	2,606	32	2,638	4,796	(45.0)
Czech Republic	7,580	19	7,599	19,204	(60.4)
Estonia	1,177	8	1,185	2,516	(52.9)
Hungary	1,493	95	1,588	4,091	(61.2)
Kazakhstan	2,267	66	2,333	2,399	(2.8)
Lithuania	1,037	17	1,054	2,793	(62.3)
Poland	11,481	427	11,908	20,896	(43.0)
Romania	1,574	150	1,724	5,463	(68.4)
Russian Federation	48,457	940	49,397	86,549	(42.9)
Slovakia	1,488	25	1,513	4,944	(69.4)
Ukraine	16,436	733	17,169	35,051	(51.0)
Others	2,515	143	2,658	8,154	(67.4)

January ~ December 2020					
Tourist Arrivals					
	By Air	By Sea	Total	Total Tourist Arrivals January to December 2019	% Change Jan ~ Dec (2020/19)
<b>Southern / Mediterranean Europe</b>	<b>20,217</b>	<b>3,238</b>	<b>23,455</b>	<b>101,384</b>	<b>(76.9)</b>
Greece	1,092	481	1,573	6,980	(77.5)
Italy	7,135	1,468	8,603	36,147	(76.2)
Portugal	1,377	225	1,602	5,193	(69.2)
Spain	3,255	130	3,385	24,489	(86.2)
Turkey	1,517	604	2,121	4,972	(57.3)
Israel	3,422	134	3,556	14,770	(75.9)
Others	2,419	196	2,615	8,833	(70.4)
<b>MIDDLE EAST</b>	<b>10,139</b>	<b>92</b>	<b>10,231</b>	<b>44,143</b>	<b>(76.8)</b>
Bahrain	543	6	549	2,285	(76.0)
Egypt	922	34	956	3,708	(74.2)
Iraq	137	1	138	852	(83.8)
Jordan	621	6	627	3,085	(79.7)
Kuwait	822	3	825	3,239	(74.5)
Lebanon	480	3	483	4,304	(88.8)
Oman	1,041	4	1,045	4,117	(74.6)
Qatar	128	1	129	1,063	(87.9)
Saudi Arabia	4,745	10	4,755	15,707	(69.7)
United Arab Emirates	350	2	352	3,528	(90.0)
Others	350	22	372	2,255	(83.5)
<b>TOTAL</b>	<b>479,563</b>	<b>28,141</b>	<b>507,704</b>	<b>1,913,702</b>	<b>(73.5)</b>

\* All visitor arrival statistics in this report are from the Department of Immigration & Emigration.

**Sri Lanka suspends tourist arrivals from all countries from 18th March 2020 due to COVID-19**